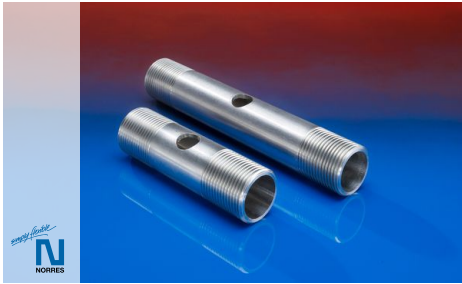


CONNECT 684



Connector for mounting membrane tube diffusers on rectangular profiles from both sides

Applications

- membrane tube diffuser, for industrial and municipal wastewater treatment plant, pressure diffusion with fine bubbles, oxygen input for nitrification in activation basins, permanent and intermittent ventilation

- oxygen input and circulation in fixed-bed and bioreactors, thorough mixing of activation basins, sand trap louvre ventilation, renaturation of lakes and rivers, aquacultures, fish farming

Properties

- conforms to RoHS guideline

Design

- Stainless Steel (INOX) 1.4541 = AISI 321

| Length | profile width | Outer-thread | Weight | Order No. |
|--------|---------------|--------------|----------|---------------|
| (in) | (in) | (inch) | (lb/pcs) | |
| 3.346 | 1.575 | 3/4" | 0.243 | 684-0085-2770 |
| 4.134 | 2.362 | 3/4" | 0.309 | 684-0105-2770 |
| 4.921 | 3.150 | 3/4" | 0.375 | 684-0125-2770 |
| 5.709 | 3.937 | 3/4" | 0.419 | 684-0145-2770 |

Accessories



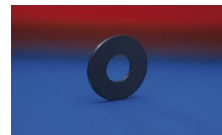
CLAMP 682



CONNECT 685



CONNECT 681



CONNECT 683