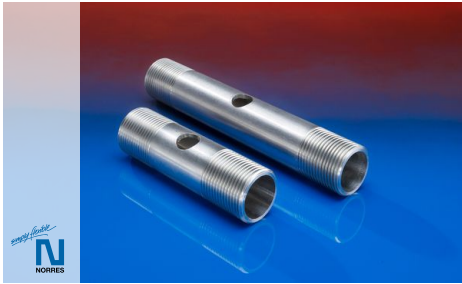


CONNECT 684



Connector for mounting membrane tube diffusers on rectangular profiles from both sides

Applications

- membrane tube diffuser, for industrial and municipal wastewater treatment plant, pressure diffusion with fine bubbles, oxygen input for nitrification in activation basins, permanent and intermittent ventilation

- oxygen input and circulation in xed-bed and bioreactors, thorough mixing of activation basins, sand trap louvre ventilation, renaturation of lakes and rivers, aquacultures, sh farming

Properties

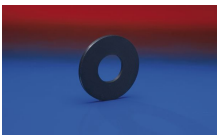
- conforms to RoHS guideline

Design

- Stainless Steel (INOX) 1.4541 = AISI 321

Length	profile width	Outer thread	Weight	Order No.
(mm)	(mm)	(in)	(kg/pcs)	
85	40	3/4"	0,110	684-0085-2770
105	60	3/4"	0,140	684-0105-2770
125	80	3/4"	0,170	684-0125-2770
145	100	3/4"	0,190	684-0145-2770

Accessories



CONNECT 683



CONNECT 685



CONNECT 681



CLAMP 682

Overpressure and underpressure are recommended threshold operating values, products can be subjected to higher loads upon request. The bending radius is measured through the inside of the hose arch. The right to make technical modifications is reserved. All values determined at 20°C and are approx. data. Additional information at www.norres.com/en/technology/.