



Membrane diffuser tube

Applications

- membrane tube diffuser, for industrial and municipal wastewater treatment plant, pressure diffusion with fine bubbles, oxygen input for nitrification in activation basins, permanent and intermittent ventilation
- oxygen input and circulation in xed-bed and bioreactors, thorough mixing of activation basins, sand trap louvre ventilation, renaturation of lakes and rivers, aquacultures, sh farming

Properties

- Operating range: normal operation 6-8, minimum 2, maximum 12 and purge operation 15 Nm³/(h*m_{aer.}.)
- easily and quickly fitted
- very good resistance to waste water and municipal sewerage in accordance with the latest instructions DWA-M 115
- conforms to RoHS guideline

Temperature Range

- 0°C to 85°C

Design

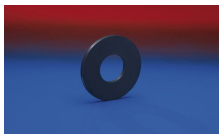
- wall: EPDM

Delivery variants

- black (standard)

Size	I.D.	Length	Ventilation Length	Weight	Order No.
(mm)	(in / mm)	(mm)	(mm)	(kg/pcs)	
63	64,5	570	500	0,220	625-0570-2701
63	64,5	820	750	0,320	625-0820-2701
63	64,5	1070	1000	0,420	625-1070-2701

Accessories



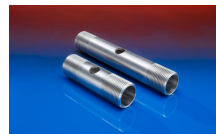
CONNECT 683



CONNECT 685



CONNECT 681



CONNECT 684



CLAMP 682



CONNECT 229