

PVC air conditioning hose, flame resistant, gray

### Applications

- flexible hose/ ducting for gases
- Ventilation, air conditioning, heating system

### Properties

- fabric reinforced
- super-light weight
- highly flexible + compressible 10:1

- flame-retardant according to: EN13501-1:2018, B-s2, d0
- approved to FMVSS 302 (flame retardant)
- conforms to RoHS guideline

### Temperature range

- 15°F to 175°F

### Design

- PROTAPE® tape hose

- spring steel wire integrated in wall
- wall: PVC coated fabric
- wall thickness 0.2 mm approx.
- Pressure max. 200 mm H<sub>2</sub>O
- Bending radius 0,6 x ID

### Delivery variants

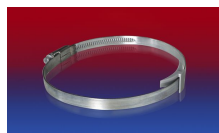
- further diameters and lengths available on request
- gray (standard)

| I.D.         | outer Ø | Bending radius | Weight  | Production lengths | Order No.     |
|--------------|---------|----------------|---------|--------------------|---------------|
| (in / mm)    | (in)    | (in)           | (lb/ft) | (ft)               |               |
| - / 82       | 3.345   | 1.929          | 0.108   | 25                 | 371-0082-3500 |
| 4 / 100-102  | 4.134   | 2.402          | 0.108   | 25                 | 371-0102-3500 |
| 5 / 125-127  | 5.118   | 2.992          | 0.134   | 25                 | 371-0127-3500 |
| 6 / 150-152  | 6.117   | 3.583          | 0.168   | 25                 | 371-0152-3500 |
| 6,3 / 160    | 6.433   | 3.780          | 0.175   | 25                 | 371-0160-3500 |
| 7 / 178-180  | 7.220   | 4.252          | 0.195   | 25                 | 371-0180-3500 |
| 8 / 200-203  | 8.126   | 4.803          | 0.242   | 25                 | 371-0203-3500 |
| 10 / 254     | 10.134  | 5.984          | 0.302   | 25                 | 371-0254-3500 |
| 12 / 305     | 12.024  | 7.205          | 0.363   | 25                 | 371-0305-3500 |
| - / 315      | 12.535  | 7.441          | 0.329   | 25                 | 371-0315-3500 |
| 14 / 356     | 14.150  | 8.425          | 0.376   | 25                 | 371-0356-3500 |
| 16 / 405-406 | 16.118  | 9.606          | 0.423   | 25                 | 371-0406-3500 |
| 18 / 457     | 18.156  | 10.787         | 0.524   | 25                 | 371-0457-3500 |
| 20 / 508     | 20.165  | 12.008         | 0.585   | 25                 | 371-0508-3500 |
| 24 / 610     | 24.181  | 14.409         | 0.699   | 25                 | 371-0610-3500 |

## Accessories



CLAMP 208



CLAMP 210 BRIDGE CLAMP



CONNECT 270-271



CONNECT 228

Positive and negative pressure ratings are the recommended maximum operating values. Products can be manufactured to meet higher operating values upon request. The bend radius is calculated from the center of the hose in an arched position. Additional information at [www.norres.com/us/technology/](http://www.norres.com/us/technology/). NORRES reserves the right to modify technical data at any time. Technical data based on tests at 68°F and are approx. values. Proper use and maintenance of NORRES hoses is the sole responsibility of purchaser and ultimate user of the product. The individual conditions, applications and the number of variables make firm recommendations technically impossible. This information is intended as a general guide only.