

PVC air conditioning hose, flame resistant, grey

Applications

- flexible hose/ ducting for gases
- Ventilation, air conditioning, heating system

Properties

- fabric reinforced
- super-light weight
- highly flexible + compressible 10:1

- flame-retardant according to: EN13501-1:2018, B-s2, d0
- approved to FMVSS 302 (flame-retardant)
- conforms to RoHS guideline

Temperature Range

- 10 °C to 80 °C

Design

- PROTAPE® tape hose

- spring steel wire integrated in wall
- wall: PVC coated fabric
- wall thickness 0.2 mm approx.
- Pressure max. 200 mm H2O
- Bending radius 0,6 x ID

Delivery variants

- further diameters and lengths available on request
- grey (standard)

I.D.	outer Ø	Bending Radius	Weight	Production Lengths	Order No.
(in / mm)	(mm)	(mm)	(kg/m)	(m)	
- / 82	84.96	49.00	0.16	10	371-0082-3500
4 / 100-102	105.00	61.00	0.16	10	371-0102-3500
5 / 125-127	130.00	76.00	0.20	10	371-0127-3500
6 / 150-152	155.36	91.00	0.25	10	371-0152-3500
6,3 / 160	163.40	96.00	0.26	10	371-0160-3500
7 / 178-180	183.40	108.00	0.29	10	371-0180-3500
8 / 200-203	206.40	122.00	0.36	10	371-0203-3500
10 / 254	257.40	152.00	0.45	10	371-0254-3500
12 / 305	305.40	183.00	0.54	10	371-0305-3500
- / 315	318.40	189.00	0.49	10	371-0315-3500
14 / 356	359.40	214.00	0.56	10	371-0356-3500
16 / 405-406	409.40	244.00	0.63	10	371-0406-3500
18 / 457	461.16	274.00	0.78	10	371-0457-3500
20 / 508	512.20	305.00	0.87	10	371-0508-3500
24 / 610	614.20	366.00	1.04	10	371-0610-3500

Accessories



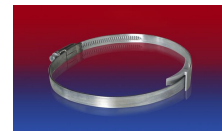
CONNECT 228



CONNECT 270-271



CLAMP 208



CLAMP 210 BRIDGE CLAMP

Overpressure and underpressure are recommended threshold operating values, products can be subjected to higher loads upon request. The bending radius is measured through the inside of the hose arch. The right to make technical modifications is reserved. All values determined at 20 °C and are approx. data. Additional information at www.norres.com/en/technology/.