

PVC ventilation hose, medium-heavy duty

Applications

- flexible hose/ ducting for gases
- welding fume extraction
- extraction arm
- animal stall, animal shed: barn ventilation
- construction industry: tunnel ventilation
- bus, utility vehicle, caravan/ trailer, mobile home/ camper/ RV, boat, ship/ vessel/ marine, yacht: ventilation, heating

Properties

- fabric reinforced
- medium-heavy duty
- highly flexible + compressible 6:1
- good resistance to alkalis and acids
- Flame-retardant wall according to NF P 92-503 M2
- conforms to RoHS guideline

Temperature range

- 15°F to 175°F

- short time to 230°F

Design

- PROTAPE® tape hose
- spring steel wire integrated in wall
- fabric-reinforced tape
- wall: PVC coated fabric
- wall thickness 0.01 in approx.

Delivery variants

- further diameters and lengths available on request
- gray (standard), black (standard)

I.D.	outer Ø	Pressure	Vacuum	Bending radius	Weight	Production lengths	Order No.
(in / mm)	(in)	(psi)	(inHG)	(in)	(lb/ft)	(ft)	
gray							
2 / 50-51	2.205	3.844	4.725	1.181	0.087	32,5 50 65	371-0050-3400
2,36 / 60	2.559	3.191	3.544	1.417	0.121	32,5 50 65	371-0060-3400
- / 70	2.992	2.901	2.953	1.654	0.141	32,5 50 65	371-0070-3400
3 / 75-76	3.268	2.538	2.658	1.772	0.148	32,5 50 65	371-0075-3400
- / 80	3.425	2.393	2.658	1.890	0.161	32,5 50 65	371-0080-3400
3,5 / 89-90	3.780	2.176	2.215	2.087	0.175	32,5 50 65	371-0090-3400
4 / 100-102	4.291	1.886	1.624	2.362	0.202	32,5 50 65	371-0100-3400
- / 110	4.646	1.740	1.477	2.598	0.181	32,5 50 65	371-0110-3400
4,72 / 120	5.039	1.595	1.329	2.835	0.195	32,5 50 65	371-0120-3400
5 / 125-127	5.236	1.523	1.181	2.953	0.208	32,5 50 65	371-0125-3400
5,5 / 140	5.827	1.378	1.181	3.307	0.228	32,5 50 65	371-0140-3400
6 / 150-152	6.260	1.305	1.181	3.543	0.249	32,5 50 65	371-0150-3400
6,3 / 160	6.614	1.233	0.591	3.780	0.262	32,5 50 65	371-0160-3400
7 / 178-180	7.441	1.015	0.591	4.213	0.296	32,5 50 65	371-0180-3400
8 / 200-203	8.189	0.943	0.591	4.724	0.329	32,5 50 65	371-0200-3400
- / 250	10.236	0.725	0.443	5.906	0.410	32,5 50 65	371-0250-3400
10 / 254	10.394	0.725	0.443	6.024	0.410	32,5 50 65	371-0254-3400
- / 300	12.244	0.653	0.295	7.087	0.511	32,5 50 65	371-0300-3400
12 / 305	12.402	0.653	0.295	7.205	0.517	32,5 40	371-0305-3400
- / 350	14.213	0.580	0.295	8.268	0.585	32,5 40	371-0350-3400
14 / 356	14.449	0.580	0.295	8.425	0.591	32,5 40	371-0356-3400
- / 400	16.142	0.508	0.148	9.449	0.672	32,5 40	371-0400-3400
16 / 405-406	16.378	0.508	0.148	9.567	0.685	32,5 40	371-0406-3400
- / 500	20.157	0.435	0.148	11.811	0.847	32,5 40	371-0500-3400
20 / 508	20.433	0.435	0.148	12.008	0.860	32,5 40	371-0508-3400

Positive and negative pressure ratings are the recommended maximum operating values. Products can be manufactured to meet higher operating values upon request. The bend radius is calculated from the center of the hose in an arched position. Additional information at www.norres.com/us/technology/. NORRES reserves the right to modify technical data at any time. Technical data based on tests at 68°F and are approx. values. Proper use and maintenance of NORRES hoses is the sole responsibility of purchaser and ultimate user of the product. The individual conditions, applications and the number of variables make firm recommendations technically impossible. This information is intended as a general guide only.

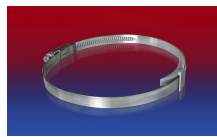
I.D.	outer Ø	Pressure	Vacuum	Bending radius	Weight	Production lengths	Order No.
(in / mm)	(in)	(psi)	(inHG)	(in)	(lb/ft)	(ft)	
- / 600	24.173	0.290	0.148	14.173	1.015	32.5	371-0600-3400

black							
2 / 50-51	2.205	3.844	4.725	1.181	0.087	32,5 50 65	371-0050-3410
2,36 / 60	2.559	3.191	3.544	1.417	0.121	32,5 50 65	371-0060-3410
- / 70	2.992	2.901	2.953	1.654	0.141	32,5 50 65	371-0070-3410
3 / 75-76	3.268	2.538	2.658	1.772	0.148	32,5 50 65	371-0075-3410
- / 80	3.425	2.393	2.658	1.890	0.161	32,5 50 65	371-0080-3410
3,5 / 89-90	3.780	2.176	2.215	2.087	0.175	32,5 50 65	371-0090-3410
4 / 100-102	4.291	1.886	1.624	2.362	0.202	32,5 50 65	371-0100-3410
- / 110	4.646	1.740	1.477	2.598	0.181	32,5 50 65	371-0110-3410
4,72 / 120	5.039	1.595	1.329	2.835	0.195	32,5 50 65	371-0120-3410
5 / 125-127	5.236	1.523	1.181	2.953	0.208	32,5 50 65	371-0125-3410
5,5 / 140	5.827	1.378	1.181	3.307	0.228	32,5 50 65	371-0140-3410
6 / 150-152	6.260	1.305	1.181	3.543	0.249	32,5 50 65	371-0150-3410
6,3 / 160	6.614	1.233	0.591	3.780	0.262	32,5 50 65	371-0160-3410
7 / 178-180	7.441	1.015	0.591	4.213	0.296	32,5 50 65	371-0180-3410
8 / 200-203	8.189	0.943	0.591	4.724	0.329	32,5 50 65	371-0200-3410
- / 250	10.236	0.725	0.443	5.906	0.410	32,5 50 65	371-0250-3410
10 / 254	10.394	0.725	0.443	6.024	0.410	32,5 50 65	371-0254-3410
- / 300	12.244	0.653	0.295	7.087	0.511	32,5 50 65	371-0300-3410
12 / 305	12.402	0.653	0.295	7.205	0.517	32,5 40	371-0305-3410
- / 350	14.213	0.580	0.295	8.268	0.585	32,5 40	371-0350-3410
14 / 356	14.449	0.580	0.295	8.425	0.591	32,5 40	371-0356-3410
- / 400	16.142	0.508	0.148	9.449	0.672	32,5 40	371-0400-3410
16 / 405-406	16.378	0.508	0.148	9.567	0.685	32,5 40	371-0406-3410
- / 500	20.157	0.435	0.148	11.811	0.847	32,5 40	371-0500-3410
20 / 508	20.433	0.435	0.148	12.008	0.860	32,5 40	371-0508-3410
- / 600	24.173	0.290	0.148	14.173	1.015	32.5	371-0600-3410

Accessories



CLAMP 208



CLAMP 210 BRIDGE CLAMP



CONNECT 228



CONNECT 270-271

Positive and negative pressure ratings are the recommended maximum operating values. Products can be manufactured to meet higher operating values upon request. The bend radius is calculated from the center of the hose in an arched position. Additional information at www.norres.com/us/technology/. NORRES reserves the right to modify technical data at any time. Technical data based on tests at 68°F and are approx. values. Proper use and maintenance of NORRES hoses is the sole responsibility of purchaser and ultimate user of the product. The individual conditions, applications and the number of variables make firm recommendations technically impossible. This information is intended as a general guide only.