

## PVC ventilation hose, medium-heavy

### Applications

- flexible hose/ ducting for gases
- welding fume extraction
- extraction arm
- animal stall, animal shed: barn ventilation
- construction industry: tunnel ventilation
- bus, utility vehicle, caravan/ trailer, mobile home/ camper/ RV, boat, ship/ vessel/ marine, yacht: ventilation, heating

### Properties

- fabric reinforced
- medium-heavy duty
- highly flexible + compressible 6:1
- good resistance to alkalis and acids
- Flame-retardant wall according to NF P 92-503 M2
- conforms to RoHS guideline

### Temperature Range

- 10°C to 80°C

- short time to 110°C

### Design

- PROTAPE® tape hose
- spring steel wire integrated in wall
- fabric-reinforced tape
- wall: PVC coated fabric
- wall thickness 0,25 mm approx.

### Delivery variants

- further diameters and lengths available on request
- grey (standard), black (standard)

I.D.	outer Ø	Pressure	Vacuum	Bending Radius	Weight	Production Lengths	Order No.
(in / mm)	(mm)	(bar)	(bar)	(mm)	(kg/m)	(m)	
<b>grey</b>							
2 / 50-51	56.00	0,265	0,160	30.00	0.13	10 15 20	371-0050-3400
2,36 / 60	65.00	0,220	0,120	36.00	0.18	10 15 20	371-0060-3400
- / 70	76.00	0,200	0,100	42.00	0.21	10 15 20	371-0070-3400
3 / 75-76	83.00	0,175	0,090	45.00	0.22	10 15 20	371-0075-3400
- / 80	87.00	0,165	0,090	48.00	0.24	10 15 20	371-0080-3400
3,5 / 89-90	96.00	0,150	0,075	53.00	0.26	10 15 20	371-0090-3400
4 / 100-102	109.00	0,130	0,055	60.00	0.30	10 15 20	371-0100-3400
- / 110	118.00	0,120	0,050	66.00	0.27	10 15 20	371-0110-3400
4,72 / 120	128.00	0,110	0,045	72.00	0.29	10 15 20	371-0120-3400
5 / 125-127	133.00	0,105	0,040	75.00	0.31	10 15 20	371-0125-3400
5,5 / 140	148.00	0,095	0,040	84.00	0.34	10 15 20	371-0140-3400
6 / 150-152	159.00	0,090	0,040	90.00	0.37	10 15 20	371-0150-3400
6,3 / 160	168.00	0,085	0,020	96.00	0.39	10 15 20	371-0160-3400
7 / 178-180	189.00	0,070	0,020	107.00	0.44	10 15 20	371-0180-3400
8 / 200-203	208.00	0,065	0,020	120.00	0.49	10 15 20	371-0200-3400
- / 250	260.00	0,050	0,015	150.00	0.61	10 15 20	371-0250-3400
10 / 254	264.00	0,050	0,015	153.00	0.61	10 15 20	371-0254-3400
- / 300	311.00	0,045	0,010	180.00	0.76	10 15 20	371-0300-3400
12 / 305	315.00	0,045	0,010	183.00	0.77	10	371-0305-3400
- / 350	361.00	0,040	0,010	210.00	0.87	10	371-0350-3400
-	367.00	0,040	0,010	214.00	0.88	10	371-0356-3400
- / 400	410.00	0,035	0,005	240.00	1.00	10	371-0400-3400
16 / 405-406	416.00	0,035	0,005	243.00	1.02	10	371-0406-3400
- / 500	512.00	0,030	0,005	300.00	1.26	10	371-0500-3400
20 / 508	519.00	0,030	0,005	305.00	1.28	10	371-0508-3400

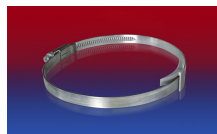
Overpressure and underpressure are recommended threshold operating values, products can be subjected to higher loads upon request. The bending radius is measured through the inside of the hose arch. The right to make technical modifications is reserved. All values determined at 20°C and are approx. data. Additional information at [www.norres.com/en/technology/](http://www.norres.com/en/technology/).

I.D.	outer Ø	Pressure	Vacuum	Bending Radius	Weight	Production Lengths	Order No.
(in / mm)	(mm)	(bar)	(bar)	(mm)	(kg/m)	(m)	
- / 600	614.00	0,020	0,005	360.00	1.51	5 6 10	371-0600-3400
<b>black</b>							
2 / 50-51	56.00	0,265	0,160	30.00	0.13	10 15 20	371-0050-3410
2,36 / 60	65.00	0,220	0,120	36.00	0.18	10 15 20	371-0060-3410
- / 70	76.00	0,200	0,100	42.00	0.21	10 15 20	371-0070-3410
3 / 75-76	83.00	0,175	0,090	45.00	0.22	10 15 20	371-0075-3410
- / 80	87.00	0,165	0,090	48.00	0.24	10 15 20	371-0080-3410
3,5 / 89-90	96.00	0,150	0,075	53.00	0.26	10 15 20	371-0090-3410
4 / 100-102	109.00	0,130	0,055	60.00	0.30	10 15 20	371-0100-3410
- / 110	118.00	0,120	0,050	66.00	0.27	10 15 20	371-0110-3410
4,72 / 120	128.00	0,110	0,045	72.00	0.29	10 15 20	371-0120-3410
5 / 125-127	133.00	0,105	0,040	75.00	0.31	10 15 20	371-0125-3410
5,5 / 140	148.00	0,095	0,040	84.00	0.34	10 15 20	371-0140-3410
6 / 150-152	159.00	0,090	0,040	90.00	0.37	10 15 20	371-0150-3410
6,3 / 160	168.00	0,085	0,020	96.00	0.39	10 15 20	371-0160-3410
7 / 178-180	189.00	0,070	0,020	107.00	0.44	10 15 20	371-0180-3410
8 / 200-203	208.00	0,065	0,020	120.00	0.49	10 15 20	371-0200-3410
- / 250	260.00	0,050	0,015	150.00	0.61	10 15 20	371-0250-3410
10 / 254	264.00	0,050	0,015	153.00	0.61	10 15 20	371-0254-3410
- / 300	311.00	0,045	0,010	180.00	0.76	10 15 20	371-0300-3410
12 / 305	315.00	0,045	0,010	183.00	0.77	10	371-0305-3410
- / 350	361.00	0,040	0,010	210.00	0.87	10	371-0350-3410
14 / 356	367.00	0,040	0,010	214.00	0.88	10	371-0356-3410
- / 400	410.00	0,035	0,005	240.00	1.00	10	371-0400-3410
16 / 405-406	416.00	0,035	0,005	243.00	1.02	10	371-0406-3410
- / 500	512.00	0,030	0,005	300.00	1.26	10	371-0500-3410
20 / 508	519.00	0,030	0,005	305.00	1.28	10	371-0508-3410
- / 600	614.00	0,020	0,005	360.00	1.51	10	371-0600-3410

## Accessories



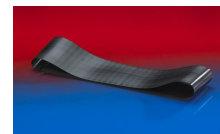
CLAMP 208



CLAMP 210 BRIDGE CLAMP



CONNECT 270-271



CONNECT 228

Overpressure and underpressure are recommended threshold operating values, products can be subjected to higher loads upon request. The bending radius is measured through the inside of the hose arch. The right to make technical modifications is reserved. All values determined at 20°C and are approx. data. Additional information at [www.norres.com/en/technology/](http://www.norres.com/en/technology/).