

PVC ventilation hose (to +120°C)

### Applications

- flexible hose/ ducting for gases
- welding fume extraction
- extraction arm
- construction industry: tunnel ventilation
- tent heating, airport gangway heating, heaters for construction sites
- heating system/ heater: fresh air supply

### Properties

- fabric reinforced
- super-light weight

- highly flexible + compressible 6:1
- very good heat resistance
- good resistance to alkalis and acids
- good resistance to chemicals
- Flame-retardant wall according to: NF P 92-503 M1
- conforms to RoHS guideline
- REACH according to --> Technology / Technical Information / REACH

### Temperature Range

- 10°C to 110°C
- short time to 120°C

### Design

- PROTAPE® tape hose
- spring steel wire integrated in wall
- fabric-reinforced tape
- wall: PVC coated fabric
- wall thickness 0,25 mm approx.

### Delivery variants

- further diameters available on request
- grey (standard)
- customer-specific branding
- compressed packed in poly bag (low transportation cost / risk, minimum storage size)

I.D.	outer Ø	Pressure	Vacuum	Bending Radius	Weight	Dimensions in Stock	Production Lengths	Order No.
(in / mm)	(mm)	(bar)	(bar)	(mm)	(kg/m)	(m)	(m)	
2 / 50-51	54.00	0,240	0,145	29.00	0.12	-	7,5 10 15	371-0051-1015
3 / 75-76	79.00	0,160	0,080	41.00	0.18	-	10	371-0076-1015
- / 80	83.00	0,150	0,080	43.00	0.19	-	7,5 10	371-0080-1015
3,5 / 89-90	93.00	0,135	0,070	48.00	0.20	-	7,5 10	371-0090-1015
4 / 100-102	105.00	0,120	0,050	54.00	0.24	-	7,5 10 15	371-0102-1015
5 / 125-127	130.00	0,095	0,035	67.00	0.32	-	7,5 10 15	371-0127-1015
5,5 / 140	143.00	0,085	0,035	73.00	0.35	-	7,5 10	371-0140-1015
6 / 150-152	155.00	0,080	0,035	79.00	0.37	-	7,5 10 15	371-0152-1015
6,3 / 160	163.00	0,075	0,020	83.00	0.44	-	7,5 10 15	371-0160-1015
7 / 178-180	183.00	0,065	0,020	93.00	0.54	-	7,5 10 15	371-0180-1015
8 / 200-203	206.00	0,600	0,020	105.00	0.60	-	7,5 10 15	371-0203-1015
10 / 254	258.00	0,045	0,015	131.00	0.79	-	7,5 10	371-0254-1015
12 / 305	309.00	0,040	0,010	157.00	0.95	-	7,5 10	371-0305-1015

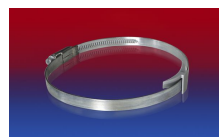
## Accessories



CONNECT 270-271



CONNECT 223



CLAMP 210 BRIDGE CLAMP



CONNECT 228



CLAMP 208

Overpressure and underpressure are recommended threshold operating values, products can be subjected to higher loads upon request. The bending radius is measured through the inside of the hose arch. The right to make technical modifications is reserved. All values determined at 20°C and are approx. data. Additional information at [www.norres.com/en/technology/](http://www.norres.com/en/technology/).