

## Polyurethane ducting, (to +255 °F)

### Applications

- flexible hose/ ducting for gases and for abrasive dust, powder, fibers
- air supply: UV dryer, IR dryer
- welding fume extraction
- extraction arm
- tent heating, airport gangway heating, heaters for construction sites

### Properties

- fabric reinforced
- super-light weight

- highly flexible + compressible 4:1
- abrasion-resistant
- good resistance to oil, gasoline, and chemicals
- Flame-retardant wall according to: NF P 92-503 M1
- conforms to RoHS guideline
- REACH according to --> Technology / Technical Information / REACH

### Temperature range

- 40 °F to 255 °F

### Design

- spring steel wire integrated in wall
- fabric-reinforced tape
- wall: polyurethane coated fabric
- wall thickness 0.01 in approx.

### Delivery variants

- further diameters and lengths available on request
- dark-gray (standard)
- customer-specific branding
- compressed packed in poly bag (low transportation cost / risk, minimum storage size)

I.D.	outer Ø	Pressure	Vacuum	Bending radius	Weight	Dimensions in Stock	Production lengths	Order No.
(in / mm)	(in)	(psi)	(inHG)	(in)	(lb/ft)	(ft)	(ft)	
2 / 50-51	2.323	13.126	9.893	1.339	0.565	25 50	-	370-0051-0000
2,5 / 63-65	2.874	10.153	7.825	1.496	0.538	25 50	-	370-0065-0000
3 / 75-76	3.307	9.863	6.792	1.496	0.517	25 50	-	370-0076-0000
- / 80	3.465	8.267	6.349	1.260	0.524	-	25 50	370-0080-0000
3,5 / 89-90	3.858	7.325	5.611	1.496	0.538	25 50	-	370-0090-0000
4 / 100-102	4.331	6.599	4.134	1.614	0.538	25 50	-	370-0102-0000
5 / 125-127	5.433	5.294	3.101	1.260	0.625	25 50	-	370-0127-0000
5,5 / 140	5.945	4.714	2.805	1.378	0.699	25 50	-	370-0140-0000
6 / 150-152	6.417	4.424	2.510	1.260	0.719	25 50	-	370-0152-0000
6,5 / 165	6.929	3.989	2.362	1.969	0.853	25 50	-	370-0165-0000
7 / 178-180	7.717	3.699	2.215	2.283	0.995	25 50	-	370-0180-0000
8 / 200-203	8.504	3.336	1.624	2.717	1.176	25 50	-	370-0203-0000
10 / 254	10.551	2.611	1.329	2.323	1.337	25 50	-	370-0254-0000

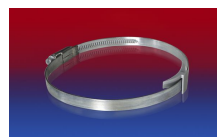
## Accessories



CONNECT 228



CLAMP 208



CLAMP 210 BRIDGE CLAMP



CONNECT 223



CONNECT 270-271

Positive and negative pressure ratings are the recommended maximum operating values. Products can be manufactured to meet higher operating values upon request. The bend radius is calculated from the center of the hose in an arched position. Additional information at [www.norres.com/us/technology/](http://www.norres.com/us/technology/). NORRES reserves the right to modify technical data at any time. Technical data based on tests at 68 °F and are approx. values. Proper use and maintenance of NORRES hoses is the sole responsibility of purchaser and ultimate user of the product. The individual conditions, applications and the number of variables make firm recommendations technically impossible. This information is intended as a general guide only.