

Alu/PVC air conditioning hose, flame resistant

Applications

- flexible hose/ ducting for gases
- welding fume extraction
- Ventilation, air conditioning, heating system

Properties

- super-light weight

- highly flexible + compressible 10:1
- conforms to RoHS guideline

Temperature Range

- 10°C to 140°C

Design

- PROTAPE® tape hose

- Pressure max. 250 mm H2O
- Air speed max. 25 m/s
- Bending radius 0,6 x ID

Delivery variants

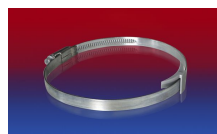
- further diameters and lengths available on request
- black (standard)

I.D.	outer Ø	Bending Radius	Weight	Production Lengths	Order No.
(in / mm)	(mm)	(mm)	(kg/m)	(m)	
3 / 75-76	77.60	46.00	0.00	10	369-0076-3506
- / 82	84.96	49.00	0.00	10	369-0082-3506
4 / 100-102	105.00	61.00	0.00	10	369-0102-3506
5 / 125-127	130.00	76.00	0.00	10	369-0127-3506
6 / 150-152	155.36	91.00	0.00	10	369-0152-3506
6,3 / 160	163.40	96.00	0.00	10	369-0160-3506
7 / 178-180	183.40	108.00	0.00	10	369-0180-3506
8 / 200-203	206.40	122.00	0.00	10	369-0203-3506
10 / 254	257.40	152.00	0.00	10	369-0254-3506
12 / 305	305.40	183.00	0.00	10	369-0305-3506
- / 315	318.40	189.00	0.00	10	369-0315-3506
14 / 356	359.40	214.00	0.00	10	369-0356-3506
16 / 405-406	409.40	244.00	0.00	10	369-0406-3506
18 / 457	461.16	274.00	0.00	10	369-0457-3506
20 / 508	512.20	305.00	0.00	10	369-0508-3506
24 / 610	614.20	366.00	0.00	10	369-0610-3506

Accessories



CLAMP 208



CLAMP 210 BRIDGE CLAMP



CONNECT 270-271



CONNECT 228

Overpressure and underpressure are recommended threshold operating values, products can be subjected to higher loads upon request. The bending radius is measured through the inside of the hose arch. The right to make technical modifications is reserved. All values determined at 20°C and are approx. data. Additional information at www.norres.com/en/technology/.