

Aluminium/Polyester air conditioning hose, flame-resistant (M1)

Applications

- flexible hose/ ducting for gases
- Ventilation, air conditioning, heating system
- Bathroom and kitchen extraction and ventilation

Properties

- super-light weight

- highly flexible + compressible 20:1
- flame-retardant according to: EN13501-1:2018, B-s1, d0
- conforms to RoHS guideline

Temperature Range

- 30°C to 140°C

Design

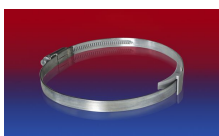
- PROTAPE® tape hose
- spring steel wire integrated in wall
- fabric-reinforced tape; wall: aluminium coated fabric
- Pressure max. 250 mm H2O
- Air speed max. 30 m/s

Delivery variants

- further diameters and lengths available on request
- silver

I.D.	outer Ø	Bending Radius	Weight	Dimensions in Stock	Production Lengths	Order No.
(in / mm)	(mm)	(mm)	(kg/m)	(m)	(m)	
3 / 75-76	77.60	61.00	0.06	-	10	369-0076-3504
- / 82	84.96	66.00	0.06	-	10	369-0082-3504
4 / 100-102	105.00	81.00	0.08	-	10	369-0102-3504
5 / 125-127	130.00	101.00	0.08	-	10	369-0130-3504
6 / 150-152	155.36	121.00	0.11	-	10	369-0152-3504
6,3 / 160	163.40	128.00	0.12	-	10	369-0160-3504
7 / 178-180	183.40	144.00	0.15	-	10	369-0180-3504
8 / 200-203	206.40	161.00	0.17	-	10	369-0203-3504
10 / 254	257.40	203.00	0.24	-	10	369-0254-3504
12 / 305	305.40	244.00	0.28	-	10	369-0305-3504
- / 315	318.40	252.00	0.29	-	10	369-0315-3504
14 / 356	359.40	285.00	0.35	-	10	369-0356-3504
16 / 405-406	409.40	324.00	0.40	-	10	369-0406-3504
18 / 457	461.16	366.00	0.46	-	10	369-0457-3504
20 / 508	512.20	406.00	0.51	-	10	369-0508-3504
24 / 610	614.20	488.00	0.78	-	10	369-0610-3504

Accessories



CLAMP 210 BRIDGE CLAMP



CLAMP 208



CONNECT 270-271



CONNECT 228

Overpressure and underpressure are recommended threshold operating values, products can be subjected to higher loads upon request. The bending radius is measured through the inside of the hose arch. The right to make technical modifications is reserved. All values determined at 20°C and are approx. data. Additional information at www.norres.com/en/technology/.