

Aluminium/Polyester air conditioning hose, insulated, antibacterial, flame resistant (M1)

Applications

- flexible hose/ ducting for gases
- Air conditioning in hospitals
- Thermal and acoustic insulation
- clean room ventilation, semiconductor production machine

Properties

- highly flexible + compressible 10:1

- insulating
- odourless
- anti-bacterial performance according to ISO 22196
- anti-fungal performance according to ASTM G21
- Flame-retardant wall according to C.S.T.B. class M1 (France)
- conforms to RoHS guideline

Temperature Range

- 30 °C to 130 °C

Design

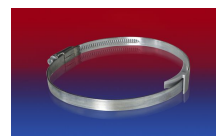
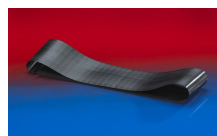
- special thermal insulation layer
- Polyester insulation thickness 25 mm, weight 250-300 g/m²
- Pressure max. 300 mm H₂O
- Air speed max. 30 m/s

Delivery variants

- further diameters and lengths available on request
- silver

I.D.	outer Ø	Bending Radius	Weight	Production Lengths	Order No.
(in / mm)	(mm)	(mm)	(kg/m)	(m)	
3 / 75-76	77.60	76.00	0.00	10	368-0076-3508
- / 82	84.96	82.00	0.00	10	368-0082-3508
4 / 100-102	105.00	102.00	0.00	10	368-0102-3508
5 / 125-127	130.00	127.00	0.00	10	368-0127-3508
6 / 150-152	155.36	152.00	0.00	10	368-0152-3508
6,3 / 160	163.40	160.00	0.00	10	368-0160-3508
7 / 178-180	183.40	180.00	0.00	10	368-0180-3508
8 / 200-203	206.40	203.00	0.00	10	368-0203-3508
10 / 254	257.40	254.00	0.00	10	368-0254-3508
12 / 305	305.40	305.00	0.00	10	368-0305-3508
- / 315	318.40	315.00	0.00	10	368-0315-3508
14 / 356	359.40	356.00	0.00	10	368-0356-3508
16 / 405-406	409.40	406.00	0.00	10	368-0406-3508
18 / 457	461.16	457.00	0.00	10	368-0457-3508
20 / 508	512.20	508.00	0.00	10	368-0508-3508
24 / 610	614.20	610.00	0.00	10	368-0610-3508

Accessories



Overpressure and underpressure are recommended threshold operating values, products can be subjected to higher loads upon request. The bending radius is measured through the inside of the hose arch. The right to make technical modifications is reserved. All values determined at 20 °C and are approx. data. Additional information at www.norres.com/en/technology/.



CONNECT 270-271

CONNECT 228

CLAMP 210 BRIDGE CLAMP

CLAMP 208

Overpressure and underpressure are recommended threshold operating values, products can be subjected to higher loads upon request. The bending radius is measured through the inside of the hose arch. The right to make technical modifications is reserved. All values determined at 20°C and are approx. data. Additional information at www.norres.com/en/technology/.