

PVC air conditioning hose, insulated, antibacterial, flame resistant

Applications

- flexible hose/ ducting for gases
- Air conditioning
- Thermal and acoustic insulation

Properties

- fabric reinforced
- highly flexible + compressible 6:1

- insulating
- flame-retardant according to: EN13501-1:2018, B-s1, d0
- anti-bacterial
- conforms to RoHS guideline

Temperature range

- 15°F to 175°F

Design

- special thermal insulation layer
- Polyester insulation: thickness 25 mm, weight 250-300 g/m²
- Pressure max. 200 mm H₂O
- Air speed max. 20 m/s
- Bending radius 0,6 x ID

Delivery variants

- gray (standard)

| I.D. | outer Ø | Bending radius | Weight | Production lengths | Order No. |
|--------------|---------|----------------|---------|--------------------|---------------|
| (in / mm) | (in) | (in) | (lb/ft) | (ft) | |
| 3 / 75-76 | 4.984 | 2.402 | 0.168 | 25 | 368-0076-3501 |
| - / 82 | 5.220 | 2.598 | 0.188 | 25 | 368-0082-3501 |
| 4 / 100-102 | 6.008 | 3.228 | 0.208 | 25 | 368-0102-3501 |
| 5 / 125-127 | 6.992 | 4.016 | 0.249 | 25 | 368-0127-3501 |
| 6 / 150-152 | 7.976 | 4.803 | 0.302 | 25 | 368-0152-3501 |
| 6,3 / 160 | 8.291 | 5.039 | 0.316 | 25 | 368-0160-3501 |
| 7 / 178-180 | 9.079 | 5.669 | 0.349 | 25 | 368-0180-3501 |
| 8 / 200-203 | 9.984 | 6.378 | 0.417 | 25 | 368-0203-3501 |
| 10 / 254 | 11.992 | 7.992 | 0.524 | 25 | 368-0254-3501 |
| 12 / 305 | 14.000 | 9.606 | 0.618 | 25 | 368-0305-3501 |
| - / 315 | 14.394 | 9.921 | 0.591 | 25 | 368-0315-3501 |
| 14 / 356 | 16.008 | 11.220 | 0.672 | 25 | 368-0356-3501 |
| 16 / 405-406 | 17.976 | 12.795 | 0.753 | 25 | 368-0406-3501 |
| 18 / 457 | 19.984 | 14.409 | 0.894 | 25 | 368-0457-3501 |
| 20 / 508 | 21.992 | 15.984 | 0.995 | 25 | 368-0508-3501 |
| 24 / 610 | 26.008 | 19.213 | 1.190 | 25 | 368-0610-3501 |

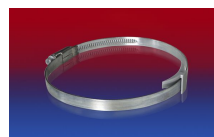
Accessories



CLAMP 208



CONNECT 270-271



CLAMP 210 BRIDGE CLAMP



CONNECT 228

Positive and negative pressure ratings are the recommended maximum operating values. Products can be manufactured to meet higher operating values upon request. The bend radius is calculated from the center of the hose in an arched position. Additional information at www.norres.com/us/technology/. NORRES reserves the right to modify technical data at any time. Technical data based on tests at 68°F and are approx. values. Proper use and maintenance of NORRES hoses is the sole responsibility of purchaser and ultimate user of the product. The individual conditions, applications and the number of variables make firm recommendations technically impossible. This information is intended as a general guide only.