

## Polyethylene food hose and pharmaceutical hose, medium-heavy duty

### Applications

- flexible hose/ ducting for gases and for dust, powder, fibers
- food industry, pharmaceutical industry: food, pharmaceutical
- conveying of dry foods e.g. rice, cereals, sugar, milk powder, powders, coffee, tea, grains, flour, frozen foods
- mixer, dryer, packaging machine, bulk-bag (big bag)-charging and discharging, mill
- tobacco industry: cigarette machine, tobacco conveying
- galvanic extraction
- chemical industry: chemical vapors, vapor return hose at loading arm, paint steam, spray mist extraction

### Properties

- medium-heavy duty
- Food grade wall, complies with: FDA 21 CFR 177.1520 3.1 and 3.2, EU-Directive 10/2011 and EC 1935/2004
- odorless and tasteless
- good resistance to alkalis and acids
- extremely good resistance to chemicals
- manufacturing process acc. GMP EC 2023/2006
- conforms to RoHS guideline
- REACH according to --> Technology / Technical Information / REACH

### Temperature range

- 30°F to 175°F

### Design

- AIRDUC® profile hose
- spring steel wire firmly embedded in wall
- wall: special polyethylene (PE)
- wall thickness 0.03 in approx.

### Delivery variants

- further diameters and lengths available on request
- transparent (standard)
- special colors: full colored
- customer-specific branding

I.D.	outer Ø	Pressure	Vacuum	Bending radius	Weight	Dimensions in Stock	Production lengths	Order No.
(in / mm)	(in)	(psi)	(inHG)	(in)	(lb/ft)	(ft)	(ft)	
1 / 25	1.181	21.103	16.832	0.669	0.141	25 50	-	362-0025-0000
- / 28	1.339	19.943	15.946	0.787	0.168	-	25	362-0028-0000
- / 30	1.457	14.214	15.356	0.866	0.141	-	25	362-0030-0000
1,25 / 32	1.535	13.344	14.913	0.906	0.155	25	-	362-0032-0000
1,5 / 38	1.772	11.313	14.027	1.024	0.175	25	-	362-0038-0000
- / 40	1.850	10.733	13.584	1.063	0.188	-	25	362-0040-0000
1,75 / 44-45	2.047	9.573	12.698	1.181	0.208	-	25	362-0045-0000
2 / 50-51	2.244	8.630	11.664	1.260	0.228	25	-	362-0050-0000
- / 55	2.441	7.832	10.336	1.378	0.249	-	25	362-0055-0000
2,36 / 60	2.638	7.252	9.450	1.457	0.269	-	25	362-0060-0000
2,5 / 63-65	2.835	6.672	8.121	1.575	0.296	25	-	362-0065-0000
- / 70	3.110	6.237	6.792	1.732	0.376	-	25	362-0070-0000
3 / 75-76	3.307	5.802	6.201	1.850	0.403	25	-	362-0075-0000
- / 80	3.504	5.439	5.906	1.929	0.430	-	25	362-0080-0000
3,5 / 89-90	3.898	4.859	5.020	2.126	0.477	25	-	362-0090-0000
4 / 100-102	4.291	4.351	3.987	2.323	0.531	25	-	362-0100-0000
- / 110	4.685	3.989	3.544	2.520	0.578	-	25	362-0110-0000
4,72 / 120	5.079	3.626	3.396	2.717	0.632	-	25	362-0120-0000
5 / 125-127	5.276	3.481	2.658	2.835	0.659	25	-	362-0125-0000
6 / 150-152	6.260	2.901	2.658	3.307	0.780	25	-	362-0150-0000
6,3 / 160	6.654	2.756	2.215	3.504	0.833	-	25	362-0160-0000
8 / 200-203	8.268	2.176	1.772	4.331	1.042	25	-	362-0200-0000
- / 250	10.236	1.740	0.738	5.315	1.290	-	25	362-0250-0000

Positive and negative pressure ratings are the recommended maximum operating values. Products can be manufactured to meet higher operating values upon request. The bend radius is calculated from the center of the hose in an arched position. Additional information at [www.norres.com/us/technology/](http://www.norres.com/us/technology/). NORRES reserves the right to modify technical data at any time. Technical data based on tests at 68°F and are approx. values. Proper use and maintenance of NORRES hoses is the sole responsibility of purchaser and ultimate user of the product. The individual conditions, applications and the number of variables make firm recommendations technically impossible. This information is intended as a general guide only.

## Accessories



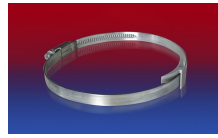
CLAMP 212



CLAMP 213



CLAMP 212 EC



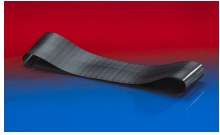
CLAMP 210 BRIDGE  
CLAMP



CONNECT 270-271



CLAMP 217



CONNECT 228



CONNECT 223