

## Antistatic food hose and pharmaceutical hose, heavy duty, stainless steel (INOX)

### Applications

- flexible hose/ ducting for high volume of abrasive powder, bulk material, granulate and for gases
- food industry, pharmaceutical industry: food, pharmaceutical
- conveying of dry foods e.g. rice, cereals, sugar, milk powder, powders, coffee, tea, grains, flour, frozen foods
- mixer, dryer, packaging machine, bulk-bag (big bag)-charging and discharging, mill
- vacuum conveying equipment, vacuum hopper, suction conveyor, dosing system
- pelleting machines/ tablet presses
- industrial vacuum cleaners, vacuum cleaners
- explosion hazard area
- animal stall, animal shed: feedstuff conveying, feedstuff plant, animal feed transport

### Properties

- heavy duty
- highly abrasion resistant

- increased pressure and vacuum resistance
- Approved by an independent testing laboratory for the complete hose acc. to EU-Directive 10/2011, EC 1935/2004 and EU 2015/174, food grade polyurethane, complies with: FDA 21 CFR 177.2600
- Approval acc. to EU-Directive 10/2011 (food simulant E) and EC 1935/2004
- odorless and tasteless
- microbe and hydrolysis resistant
- good resistance to oil, gasoline, and chemicals
- very good low temperature flexibility
- Permanently antistatic wall: according to ISO 8031 electrical and surface resistance  $<10^9 \Omega$  (according to TRGS 727  $<2,5 \cdot 10^8 \Omega \cdot m$  and NFPA 652  $10^8-10^9 \Omega$ )
- in accordance with ATEX 2014/34/EU (1999/92/EC) and German TRGS 727: pneumatic transport of flammable dusts and bulk materials (Zone 20, 21, 22 inside), aspiration of combustible dusts (Zone 22 inside),
- in accordance with ATEX 2014/34/EU (1999/92/EC) and German TRGS 727: for conveying for flammable liquids (inside zone 0, 1, 2), for conveying for non-flammable liquids, for use in zone 1 and 2 (gases), for use in zone 0 (gases)
- according to DIN 26057 Type 3
- manufacturing process acc. GMP EC 2023/2006
- conforms to RoHS guideline

- REACH according to --> Technology / Technical Information / REACH

### Temperature range

- 40 °F to 195 °F
- short time to 255 °F

### Design

- AIRDUC® profile hose
- spring steel wire firmly embedded in wall
- spiral: stainless steel wire (INOX)
- wall: permanently antistatic premium ether-polyurethane (Pre-PUR®)
- wall thickness 0.055 to 0.06 in approx.

### Delivery variants

- further diameters and lengths available on request
- transparent (standard)
- customer-specific branding

I.D.	outer Ø	Pressure	Vacuum	Bending radius	Weight	Dimensions in Stock	Production lengths	Order No.
(in / mm)	(in)	(psi)	(inHG)	(in)	(lb/ft)	(ft)	(ft)	
1 / 25	1.260	51.707	29.530	0.787	0.188	25	-	355-0025-1018
1,25 / 32	1.654	50.619	29.530	1.024	0.296	25	-	355-0032-1018
1,5 / 38	1.890	43.149	29.087	1.142	0.349	25	-	355-0038-1018
- / 40	1.969	41.119	27.611	1.181	0.363	-	25	355-0040-1018
2 / 50-51	2.362	33.359	22.148	1.378	0.444	25	-	355-0050-1018
- / 55	2.559	30.458	20.080	1.496	0.484	-	25	355-0055-1018
2,36 / 60	2.756	27.993	18.456	1.575	0.524	-	25	355-0060-1018
2,5 / 63-65	2.953	25.962	16.980	1.693	0.565	25	-	355-0065-1018
- / 70	3.189	24.149	14.913	2.441	0.659	-	25	355-0070-1018
3 / 75-76	3.386	22.626	14.027	2.598	0.706	25	-	355-0075-1018
- / 80	3.583	21.248	13.289	2.717	0.746	-	25	355-0080-1018

Positive and negative pressure ratings are the recommended maximum operating values. Products can be manufactured to meet higher operating values upon request. The bend radius is calculated from the center of the hose in an arched position. Additional information at [www.norres.com/us/technology/](http://www.norres.com/us/technology/). NORRES reserves the right to modify technical data at any time. Technical data based on tests at 68 °F and are approx. values. Proper use and maintenance of NORRES hoses is the sole responsibility of purchaser and ultimate user of the product. The individual conditions, applications and the number of variables make firm recommendations technically impossible. This information is intended as a general guide only.



I.D.	outer Ø	Pressure	Vacuum	Bending radius	Weight	Dimensions in Stock	Production lengths	Order No.
(in / mm)	(in)	(psi)	(inHG)	(in)	(lb/ft)	(ft)	(ft)	
3,5 / 89-90	3.976	18.928	11.664	2.992	0.874	-	25	355-0090-1018
4 / 100-102	4.370	17.115	11.369	3.268	1.001	25	-	355-0100-1018
5 / 125-127	5.354	13.779	9.007	3.976	1.237	25	-	355-0125-1018
6 / 150-152	6.339	11.531	8.416	4.646	1.620	25	-	355-0150-1018
6,3 / 160	6.772	10.805	7.825	4.921	1.720	-	25	355-0160-1018
7 / 178-180	7.520	9.645	6.940	5.472	1.949	25	-	355-0180-1018
8 / 200-203	8.386	8.702	4.282	6.142	2.097	25	-	355-0200-1018

## Accessories



CONNECT PRESS ASSEMBLY 232



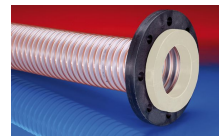
CONNECT THREAD FITTING 234



CLAMP 213



CONNECT 270-271



CONNECT 244 FOOD



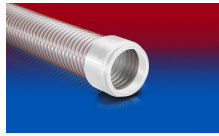
CONNECT 223



CONNECT DAIRY FITTING 247



CONNECT 240 + 241 FOOD



CONNECT 245 FOOD



CLAMP 217



CONNECT SAFETY CLAMP ASSEMBLY 231



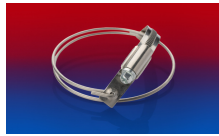
CLAMP 212 EC



CONNECT MOULD ASSEMBLY 233



CONNECT 243 FOOD



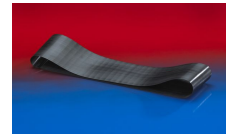
CLAMP 216



CONNECT TRI-CLAMP FITTING 245



CONNECT ASEPTIC FITTING 249



CONNECT 228



CONNECT 246 FOOD



CLAMP 212