

## Antistatic food hose and pharmaceutical hose, medium-heavy duty and reinforced, stainless steel (INOX)

### Applications

- flexible hose/ ducting for abrasive powder, bulk material, granulate and for gases
- food industry, pharmaceutical industry: food, pharmaceutical
- conveying of dry foods e.g. rice, cereals, sugar, milk powder, powders, coffee, tea, grains, flour, frozen foods
- vacuum conveying equipment, vacuum hopper, suction conveyor, dosing system
- pelleting machines/ tablet presses
- mixer, dryer, packaging machine, bulk-bag (big bag)-charging and discharging, mill
- explosion hazard area

### Properties

- medium-heavy duty
- highly abrasion resistant
- Approved by an independent testing laboratory for the complete hose acc. to EU-Directive 10/2011, EC 1935/2004 and EU 2015/174, food grade polyurethane, complies with: FDA 21 CFR 177.2600

- Approval acc. to EU-Directive 10/2011 (food simulant E) and EC 1935/2004
- odorless and tasteless
- microbe and hydrolysis resistant
- good resistance to oil, gasoline, and chemicals
- very good low temperature flexibility
- Permanently antistatic wall: according to ISO 8031 electrical and surface resistance  $<10^9 \Omega$  (according to TRGS 727  $<2,5 \cdot 10^8 \Omega \cdot m$  and NFPA 652  $10^8-10^9 \Omega$ )
- in accordance with ATEX 2014/34/EU (1999/92/EC) and German TRGS 727: pneumatic transport of flammable dusts and bulk materials (Zone 20, 21, 22 inside), aspiration of combustible dusts (Zone 22 inside),
- in accordance with ATEX 2014/34/EU (1999/92/EC) and German TRGS 727: for conveying for flammable liquids (inside zone 0, 1, 2), for conveying for non-flammable liquids, for use in zone 1 and 2 (gases), for use in zone 0 (gases)
- manufacturing process acc. GMP EC 2023/2006
- conforms to RoHS guideline
- REACH according to --> Technology / Technical Information / REACH

### Temperature range

- 40 °F to 195 °F
- short time to 255 °F

### Design

- AIRDUC® profile hose
- spring steel wire firmly embedded in wall
- spiral: stainless steel wire (INOX)
- wall: permanently antistatic premium ether-polyurethane (Pre-PUR®)
- wall thickness 0.04 approx.

### Delivery variants

- further diameters and lengths available on request
- transparent (standard)
- customer-specific branding

I.D.	outer Ø	Pressure DIN 26057 (50% Elongation)	Vacuum DIN 26057 (axially fixed)	Bending radius	Weight	Dimensions in Stock	Production lengths	Order No.
(in / mm)	(in)	(psi)	(inHG)	(in)	(lb/ft)	(ft)	(ft)	
1 / 25	1.299	38.291 (65.123)	20.080 (29.530)	0.866	0.148	25	-	351-0025-1018
1,25 / 32	1.575	30.313 (51.634)	12.993	1.102	0.188	25	-	351-0032-1018
1,5 / 38	1.811	25.745 (43.802)	10.926 (29.530)	1.260	0.215	25	-	351-0038-1018
- / 40	1.890	24.512 (41.626)	10.483 (29.530)	1.299	0.228	-	25	351-0040-1018
2 / 50-51	2.283	19.798 (33.649)	8.416 (29.530)	1.535	0.276	25	-	351-0050-1018
2,36 / 60	2.677	16.607 (28.138)	6.940 (24.215)	1.772	0.329	-	25	351-0060-1018
2,5 / 63-65	2.874	15.302 (25.962)	6.497 (20.671)	1.890	0.397	25	-	351-0065-1018
- / 70	3.110	14.286 (24.222)	4.282 (24.510)	2.047	0.397	-	25	351-0070-1018
3 / 75-76	3.307	13.344 (22.626)	3.987 (21.262)	2.165	0.430	25	-	351-0075-1018
- / 80	3.504	12.546 (21.176)	3.691 (18.899)	2.283	0.457	-	25	351-0080-1018
3,5 / 89-90	3.898	11.168 (18.855)	3.248 (14.765)	2.520	0.504	-	25	351-0090-1018
4 / 100-102	4.291	10.080 (17.115)	3.101 (19.490)	2.756	0.652	25	-	351-0100-1018
- / 110	4.685	9.138 (15.519)	2.805 (15.946)	2.992	0.712	-	25	351-0110-1018

Positive and negative pressure ratings are the recommended maximum operating values. Products can be manufactured to meet higher operating values upon request. The bend radius is calculated from the center of the hose in an arched position. Additional information at [www.norres.com/us/technology/](http://www.norres.com/us/technology/). NORRES reserves the right to modify technical data at any time. Technical data based on tests at 68 °F and are approx. values. Proper use and maintenance of NORRES hoses is the sole responsibility of purchaser and ultimate user of the product. The individual conditions, applications and the number of variables make firm recommendations technically impossible. This information is intended as a general guide only.



I.D.	outer Ø	Pressure DIN 26057 (50% Elongation)	Vacuum DIN 26057 (axially fixed)	Bending radius	Weight	Dimensions in Stock	Production lengths	Order No.
(in / mm)	(in)	(psi)	(inHG)	(in)	(lb/ft)	(ft)	(ft)	
5 / 125-127	5.276	8.050 (13.634)	2.510 (12.403)	3.346	0.806	25	-	351-0125-1018
5,5 / 140	5.866	7.252 (12.183)	2.215 (9.745)	3.701	0.901	-	25	351-0140-1018
6 / 150-152	6.260	6.744 (11.458)	2.215 (10.926)	3.937	1.022	25	-	351-0150-1018
6,3 / 160	6.654	6.309 (10.733)	2.067 (9.450)	4.173	1.082	-	25	351-0160-1018
7 / 178-180	7.441	5.657 (9.573)	1.772 (7.383)	4.646	1.216	25	-	351-0180-1018
8 / 200-203	8.228	5.076 (8.557)	1.624 (5.906)	5.236	1.364	25	-	351-0200-1018
- / 225	9.213	4.496 (7.687)	1.181 (4.134)	5.709	1.452	-	25	351-0225-1018

## Accessories



CLAMP 212



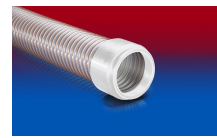
CLAMP 213



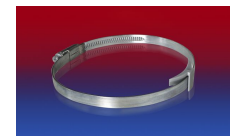
CONNECT ASEPTIC  
FITTING 249



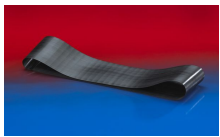
CONNECT 243  
FOOD



CONNECT 245  
FOOD



CLAMP 210 BRIDGE  
CLAMP



CONNECT 228



CONNECT MOULD  
ASSEMBLY 233



CONNECT 246  
FOOD



CONNECT DAIRY  
FITTING 247



CONNECT 223



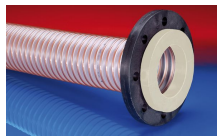
CONNECT 240 + 241  
FOOD



CONNECT TRI-  
CLAMP FITTING 245



CLAMP 217



CONNECT 244  
FOOD



CLAMP 212 EC



CONNECT THREAD  
FITTING 234



CONNECT 270-271