

Food hose and pharmaceutical hose, medium-heavy duty and reinforced

Applications

- flexible hose/ ducting for abrasive powder, bulk material, granulate and for gases
- food industry, pharmaceutical industry: food, pharmaceutical
- conveying of dry foods e.g. rice, cereals, sugar, milk powder, powders, coffee, tea, grains, flour, frozen foods
- vacuum conveying equipment, vacuum hopper, suction conveyor, dosing system
- mixer, dryer, packaging machine, bulk-bag (big bag)-charging and discharging, mill
- industrial vacuum cleaners, vacuum cleaners

Properties

- medium-heavy duty
- highly abrasion resistant

- Approved by an independent testing laboratory for the complete hose acc. to EU-Directive 10/2011, EC 1935/2004 and EU 2015/174, food grade polyurethane, complies with: FDA 21 CFR 177.2600
- Approval acc. to EU-Directive 10/2011 (food simulants A, B, C or E and D2) and EC 1935/2004
- odorless and tasteless
- microbe and hydrolysis resistant
- good resistance to oil, gasoline, and chemicals
- very good low temperature flexibility
- manufacturing process acc. GMP EC 2023/2006
- flame-retardant according to: UL94-HB
- conforms to RoHS guideline
- REACH according to --> Technology / Technical Information / REACH

Temperature range

- 40 °F to 195 °F
- short time to 255 °F

Design

- AIRDUC® profile hose
- spring steel wire firmly embedded in wall
- wall: special premium ether-polyurethane (Pre-PUR®)
- wall thickness 0.04 approx.

Delivery variants

- further diameters and lengths available on request
- transparent (standard)
- customer-specific branding

I.D. (in / mm)	outer Ø (in)	Pressure DIN 26057 (50% Elongation) (psi)	Vacuum DIN 26057 (axially fixed) (inHG)	Bending radius (in)	Weight (lb/ft)	Minimum Quantity (ft)	Dimensions in Stock (ft)	Production lengths (ft)	Order No.
Standard version									
1 / 25	1.260	39.378 (84.848)	20.080 (29.530)	0.906	0.134	-	25 50	-	351-0025-0000
- / 30	1.496	33.214 (71.360)	13.879 (29.530)	1.063	0.175	-	-	25 50	351-0030-0000
1,25 / 32	1.575	31.256 (67.154)	12.993 (29.530)	1.102	0.188	-	-	25 50	351-0032-0000
1,36 / 35	1.693	28.645 (61.642)	11.960 (29.530)	1.181	0.202	-	-	25 50	351-0035-0000
1,5 / 38	1.811	26.542 (57.001)	10.926 (29.530)	1.260	0.215	-	25 50	-	351-0038-0000
- / 40	1.890	25.237 (54.245)	10.483 (29.530)	1.299	0.228	-	-	25 50	351-0040-0000
1,75 / 44-45	2.087	22.554 (48.298)	9.302 (29.530)	1.417	0.255	-	-	25 50	351-0045-0000
2 / 50-51	2.283	20.378 (43.657)	8.416 (29.530)	1.535	0.276	-	25 50	-	351-0050-0000
- / 55	2.480	18.565 (39.741)	7.530 (28.939)	1.654	0.302	-	-	25 50	351-0055-0000
2,36 / 60	2.677	17.042 (36.550)	6.940 (24.215)	1.772	0.329	-	-	25 50	351-0060-0000
2,5 / 63-65	2.874	15.809 (33.794)	6.497 (20.671)	1.890	0.356	-	25 50	-	351-0065-0000
- / 70	3.110	14.649 (31.474)	4.430 (24.805)	2.047	0.397	-	-	25 50	351-0070-0000
3 / 75-76	3.307	13.706 (29.443)	4.134 (21.557)	2.165	0.430	-	25 50	-	351-0075-0000
- / 80	3.504	12.909 (27.558)	3.839 (18.899)	2.283	0.457	-	-	25 50	351-0080-0000
3,5 / 89-90	3.898	11.458 (24.512)	3.396 (15.060)	2.520	0.504	-	25 50	-	351-0090-0000
4 / 100-102	4.291	10.370 (22.191)	3.248 (19.490)	2.756	0.652	-	25 50	-	351-0100-0000
- / 110	4.685	9.428 (20.161)	2.953 (15.946)	2.992	0.712	-	-	25 50	351-0110-0000
4,5 / 114-115	4.882	8.992 (19.290)	2.805 (14.765)	3.110	0.746	-	25 50	-	351-0115-0000
4,72 / 120	5.079	8.630 (18.565)	2.658 (13.289)	3.228	0.780	-	-	25 50	351-0120-0000
5 / 125-127	5.276	8.340 (17.840)	2.658 (12.403)	3.346	0.806	-	25 50	-	351-0125-0000

Positive and negative pressure ratings are the recommended maximum operating values. Products can be manufactured to meet higher operating values upon request. The bend radius is calculated from the center of the hose in an arched position. Additional information at www.norres.com/us/technology/. NORRES reserves the right to modify technical data at any time. Technical data based on tests at 68 °F and are approx. values. Proper use and maintenance of NORRES hoses is the sole responsibility of purchaser and ultimate user of the product. The individual conditions, applications and the number of variables make firm recommendations technically impossible. This information is intended as a general guide only.

AIRDUC® PUR 351 FOOD (MD)



I.D.	outer Ø	Pressure DIN 26057 (50% Elongation)	Vacuum DIN 26057 (axially fixed)	Bending radius	Weight	Minimum Quantity	Dimensions in Stock	Production lengths	Order No.
(in / mm)	(in)	(psi)	(inHG)	(in)	(lb/ft)	(ft)	(ft)	(ft)	
- / 130	5.472	7.977 (17.115)	2.510 (11.517)	3.465	0.840	-	-	25 50	351-0130-0000
5,5 / 140	5.866	7.397 (15.954)	2.362 (9.745)	3.701	0.901	-	25 50	-	351-0140-0000
6 / 150-152	6.260	6.962 (14.794)	1.919 (10.631)	3.937	1.022	-	25 50	-	351-0150-0000
6,3 / 160	6.654	6.527 (13.924)	1.919 (9.450)	4.173	1.082	-	-	25 50	351-0160-0000
- / 170	7.047	6.164 (13.054)	1.772 (8.268)	4.331	1.149	-	-	25 50	351-0170-0000
- / 175	7.244	5.947 (12.764)	1.772 (7.678)	4.528	1.183	-	-	25 50	351-0175-0000
7 / 178-180	7.441	5.802 (12.328)	1.624 (7.087)	4.646	1.216	-	25 50	-	351-0180-0000
8 / 200-203	8.228	5.221 (11.168)	1.477 (5.611)	5.118	1.344	-	25 50	-	351-0200-0000
- / 225	9.213	4.641 (9.863)	1.181 (4.134)	5.709	1.452	-	-	25	351-0225-0000
- / 250	10.197	4.206 (8.992)	1.034 (3.248)	6.299	1.606	-	-	25 50	351-0250-0000
- / 275	11.181	3.771 (8.122)	1.034 (2.658)	6.890	1.767	-	-	25	351-0275-0000
11 / 280	11.378	3.771 (7.977)	0.886 (2.362)	7.008	1.794	-	25	-	351-0280-0000
- / 300	12.165	3.481 (7.397)	0.886 (2.067)	7.480	1.922	-	-	25	351-0300-0000
- / 315	12.756	3.336 (7.107)	0.886 (1.772)	7.835	2.016	-	-	25	351-0315-0000
- / 325	13.150	3.191 (6.817)	0.886 (1.772)	8.071	2.083	-	-	25	351-0325-0000
- / 350	14.134	2.973 (6.382)	0.738 (1.477)	8.661	2.238	-	-	25	351-0350-0000
- / 375	15.118	2.828 (5.947)	0.738 (1.477)	9.331	2.621	-	-	25	351-0375-0000
- / 400	16.102	2.611 (5.657)	0.738 (1.181)	9.843	2.870	-	-	25	351-0400-0000
- / 450	18.071	2.321 (4.931)	0.591 (0.886)	11.142	3.226	-	-	25	351-0450-0000
- / 500	20.039	2.103 (4.496)	0.591 (0.886)	12.402	3.582	-	-	25	351-0500-0000

Accessories



CONNECT ASEPTIC FITTING 249



CONNECT DAIRY FITTING 247



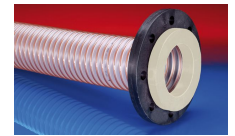
CONNECT 246 FOOD



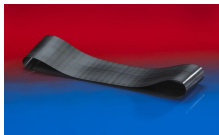
CONNECT 223



CLAMP 212



CONNECT 244 FOOD



CONNECT 228



CLAMP 212 EC



CONNECT 243 FOOD



CONNECT 245 FOOD



CONNECT 240 + 241 FOOD



CLAMP 213



CONNECT MOULD ASSEMBLY 233



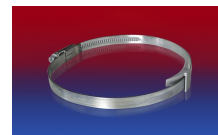
CONNECT 270-271



CONNECT TRI-CLAMP FITTING 245



CLAMP 217



CLAMP 210 BRIDGE CLAMP



CONNECT THREAD FITTING 234

Positive and negative pressure ratings are the recommended maximum operating values. Products can be manufactured to meet higher operating values upon request. The bend radius is calculated from the center of the hose in an arched position. Additional information at www.norres.com/us/technology/. NORRES reserves the right to modify technical data at any time. Technical data based on tests at 68 °F and are approx. values. Proper use and maintenance of NORRES hoses is the sole responsibility of purchaser and ultimate user of the product. The individual conditions, applications and the number of variables make firm recommendations technically impossible. This information is intended as a general guide only.