

Antistatic polyurethane hose, medium-heavy, microbe resistant

Applications

- flexible hose/ ducting for high throughput of abrasive powder, bulk material, granulate and for gases
- extraction unit, dedusting system, filter system, oil mist extraction
- compressor, side channel blower, vacuum pump, pressure pump, pump
- municipal vehicle: sweeper, sweeping machine
- municipal vehicle: lawn mower, slope mower, leaf blower/ leaf collector

Properties

- medium-heavy duty
- highly abrasion resistant

- increased pressure and vacuum resistance
- microbe resistant
- good resistance to oil, gasoline and chemicals
- very good low temperature flexibility
- Permanently antistatic wall: in accordance with ISO 8031 electrical and surface resistance approx. $10^9 \Omega$
- conforms to RoHS guideline
- REACH according to --> Technology / Technical Information / REACH

Temperature Range

- 40 °C to 90 °C

- short time to 125 °C

Design

- PROTAPE® tape hose
- plastic coated spring steel wire integrated in wall
- wall: permanently antistatic premium ester-polyurethane (Pre-PUR®)
- wall thickness 0,9 mm approx.

Delivery variants

- further diameters and lengths available on request
- transparent (standard)
- Imprint: <ID> antistatic + microbe resistant (neutral batch no.)

I.D. (in / mm)	outer Ø (mm)	Pressure DIN 26057 (50% Elongation) (bar)	Vacuum DIN 26057 (axially fixed) (bar)	Bending Radius (mm)	Weight (kg/m)	Dimensions in Stock (m)	Order No.
- / 40	49.00	1,020 (2,640)	0,505 (1,000)	38.00	0.46	10	333-0040-0007
2 / 50-51	59.50	0,815 (2,187)	0,41 (0,95)	48.00	0.60	10	333-0050-0007
2,36 / 60	69.00	0,685 (1,770)	0,350 (0,900)	58.00	0.70	10	333-0060-0007
2,5 / 63-65	73.50	0,635 (1,635)	0,320 (0,775)	63.00	0.75	10	333-0065-0007
- / 70	79.00	0,590 (1,520)	0,300 (0,670)	68.00	0.81	10	333-0070-0007
3 / 75-76	84.50	0,550 (1,420)	0,280 (0,590)	73.00	0.87	10	333-0075-0007
- / 80	89.00	0,515 (1,330)	0,260 (0,520)	78.00	0.92	10	333-0080-0007
4 / 100-102	113.50	0,415 (1,070)	0,110 (0,485)	98.00	0.99	10	333-0100-0007
5 / 125-127	138.50	0,335 (0,855)	0,090 (0,315)	123.00	1.22	10	333-0125-0007
5,5 / 140	152.00	0,295 (0,765)	0,080 (0,250)	138.00	1.35	10	333-0140-0007
6 / 150-152	163.50	0,275 (0,715)	0,075 (0,220)	148.00	1.45	10	333-0150-0007
6,3 / 160	172.00	0,260 (0,670)	0,070 (0,195)	158.00	1.53	10	333-0160-0007
7 / 178-180	192.00	0,230 (0,595)	0,060 (0,150)	178.00	1.71	10	333-0180-0007
8 / 200-203	214.50	0,210 (0,535)	0,055 (0,125)	198.00	1.92	10	333-0200-0007
- / 250	263.00	0,165 (0,430)	0,045 (0,095)	248.00	2.52	10	333-0250-0007

Accessories



Overpressure and underpressure are recommended threshold operating values, products can be subjected to higher loads upon request. The bending radius is measured through the inside of the hose arch. The right to make technical modifications is reserved. All values determined at 20 °C and are approx. data. Additional information at www.norres.com/en/technology/.



CLAMP 217

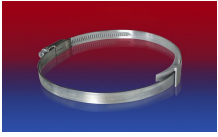
CONNECT 228

CONNECT 223

CONNECT 270-271

CLAMP 212

CLAMP 213



CLAMP 210 BRIDGE
CLAMP

Overpressure and underpressure are recommended threshold operating values, products can be subjected to higher loads upon request. The bending radius is measured through the inside of the hose arch. The right to make technical modifications is reserved. All values determined at 20°C and are approx. data. Additional information at www.norres.com/en/technology/.