

Suction hose and pressure hose according to DIN 4102-B1, light weight

### Applications

- flexible hose/ ducting for gases and for abrasive dust, powder, fibers
- rail vehicle, train, railway, tram, boat, ship/ vessel, yacht: ventilation, heating, roof drainage, sand conveying in rail vehicle braking systems, sanitary installation

### Properties

- light weight
- highly flexible + compressible 3:1
- abrasion-resistant
- microbe and hydrolysis resistant

- good resistance to oil, gasoline, and chemicals
- flame-retardant according to: DIN 4102-B1, FMVSS 302
- conforms to RoHS guideline
- REACH according to --> Technology / Technical Information / REACH

### Temperature range

- 40°F to 195°F
- short time to 255°F

### Design

- PROTAPE® tape hose
- spring steel wire integrated in wall
- extruded tape
- wall: special premium polyurethane with flame retardant additive (Pre-PUR®)
- wall thickness 0.025 in approx.

### Delivery variants

- further diameters and lengths available on request
- transparent (standard)
- special colors: partially colored, completely colored
- customer-specific branding

I.D.	outer Ø	Pressure	Vacuum	Bending radius	Weight	Production lengths	Order No.
(in / mm)	(in)	(psi)	(inHG)	(in)	(lb/ft)	(ft)	
- / 40	1.850	14.722	8.859	1.850	0.175	25 50	332-0040-0000
2 / 50-51	2.283	11.821	7.678	2.283	0.242	25 50	332-0050-0000
2,5 / 63-65	2.874	9.138	5.315	2.874	0.316	25 50	332-0065-0000

## Accessories



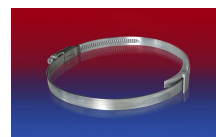
CONNECT 223



CLAMP 213



CLAMP 217



CLAMP 210 BRIDGE CLAMP



CLAMP 212



CONNECT 270-271