

## Food hose and pharmaceutical hose, super-light

### Applications

- flexible hose/ ducting for gases and for abrasive dust, powder, fibres
- food industry, pharmaceutical industry: foodstuff, pharmaceutical
- conveying of dry foods e.g. rice, cereals, sugar, milk powder, powders, coffee, tea, grains, flour, frozen foods
- mixer, dryer, packaging machine, bulk-bag (big bag)-charging and discharging, mill
- extraction unit, dedusting system, filter system, oil mist extraction

### Properties

- super-light weight
- highly flexible + compressible 3:1

- abrasion-resistant
- Approved by an independent testing laboratory for the complete hose acc. to EU-Directive 10/2011, EC 1935/2004 and EU 2015/174, food grade polyurethane, complies with: FDA 21 CFR 177.2600
- Approval acc. to EU-Directive 10/2011 (food simulants A, B, C or E and D2) and EC 1935/2004
- microbe and hydrolysis resistant
- odourless and tasteless
- good resistance to oil, gasoline and chemicals
- conforms to RoHS guideline
- REACH according to --> Technology / Technical Information / REACH

### Temperature Range

- 40°C to 90°C
- short time to 125°C

### Design

- PROTAPE® tape hose
- spring steel wire integrated in wall
- wall: special premium ether-polyurethane (Pre-PUR®)
- wall thickness 0,4 mm approx.

### Delivery variants

- further diameters and lengths available on request
- transparent (standard)
- customer-specific branding

I.D. (in / mm)	outer Ø (mm)	Pressure DIN 26057 (50% Elongation) (bar)	Vacuum DIN 26057 (axially fixed) (bar)	Bending Radius (mm)	Weight (kg/m)	Dimensions in Stock (m)	Production Lengths (m)	Order No.
-------------------	-----------------	---	---	---------------------------	------------------	-------------------------------	------------------------------	-----------

#### standard

2 / 50-51	58.50	0,480 (1,42)	0,170 (0,85)	33.00	0.27	-	5 15	331-0050-0000
2,36 / 60	68.00	0,405 (1,19)	0,145 (0,59)	38.00	0.32	-	5 10 15	331-0060-0000
3 / 75-76	83.50	0,325 (0,95)	0,115 (0,39)	45.00	0.40	-	5 10 15	331-0075-0000
- / 80	88.00	0,305 (0,89)	0,110 (0,34)	48.00	0.42	-	5 10 15	331-0080-0000
4 / 100-102	109.50	0,245 (0,71)	0,055 (0,30)	58.00	0.49	-	5 15	331-0100-0000
6 / 150-152	159.50	0,160 (0,48)	0,035 (0,13)	83.00	0.85	-	5 15	331-0150-0000
6,3 / 160	168.00	0,150 (0,45)	0,035 (0,12)	88.00	0.90	-	5 10	331-0160-0000

#### Special type DB.PLA: Polyurethane food safe according to FDA, no approval according to EU regulation for the entire hose, stocked only in Italy

2 / 50-51	59.00	0,861	0,499	30.00	0.25	-	5 15	331-0050-5020
2,36 / 60	68.00	0,719	0,417	36.00	0.30	-	5 15	331-0060-5020
- / 70	78.00	0,617	0,358	42.00	0.36	-	5 15	331-0070-5020
3 / 75-76	84.00	0,577	0,334	45.00	0.38	-	5 15	331-0075-5020
- / 80	88.00	0,541	0,341	48.00	0.41	-	5 15	331-0080-5020
3,5 / 89-90	98.00	0,481	0,279	53.00	0.44	-	5 15	331-0090-5020
4 / 100-102	109.00	0,434	0,251	60.00	0.46	-	5 15	331-0100-5020
- / 110	118.00	0,394	0,229	66.00	0.50	-	5 15	331-0110-5020
4,72 / 120	128.00	0,362	0,21	72.00	0.54	-	5 15	331-0120-5020
5 / 125-127	134.00	0,347	0,201	75.00	0.59	-	5 15	331-0125-5020
- / 130	138.00	0,334	0,194	78.00	0.64	-	5 15	331-0130-5020
5,5 / 140	148.00	0,31	0,180	84.00	0.67	-	5 15	331-0140-5020

Overpressure and underpressure are recommended threshold operating values, products can be subjected to higher loads upon request. The bending radius is measured through the inside of the hose arch. The right to make technical modifications is reserved. All values determined at 20°C and are approx. data. Additional information at [www.norres.com/en/technology/](http://www.norres.com/en/technology/).



I.D.	outer Ø	Pressure DIN 26057 (50% Elongation)	Vacuum DIN 26057 (axially fixed)	Bending Radius	Weight	Dimensions in Stock	Production Lengths	Order No.
(in / mm)	(mm)	(bar)	(bar)	(mm)	(kg/m)	(m)	(m)	
6 / 150-152	159.00	0,290	0,168	90.00	0.71	-	5 15	331-0150-5020
6,3 / 160	169.00	0,272	0,158	96.00	0.76	-	5 15	331-0160-5020
7 / 178-180	189.00	0,242	0,140	107.00	0.81	-	5 15	331-0180-5020
8 / 200-203	211.00	0,218	0,126	120.00	0.95	-	5 15	331-0200-5020
- / 225	234.00	0,193	0,112	135.00	1.04	-	5	331-0225-5020
- / 250	260.00	0,174	0,101	150.00	1.13	-	5	331-0250-5020
- / 300	310.00	0,145	0,084	180.00	1.55	-	5	331-0300-5020
- / 350	360.00	0,125	0,072	210.00	1.82	-	5	331-0350-5020
- / 400	410.00	0,109	0,063	240.00	2.10	-	5	331-0400-5020
- / 450	460.00	0,097	0,056	270.00	2.41	-	5	331-0450-5020

## Accessories



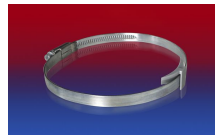
CLAMP 213



CONNECT 223



CONNECT 270-271



CLAMP 210 BRIDGE  
CLAMP



CLAMP 217



CLAMP 212