

Antistatic polyurethane hose, light weight, black

Applications

- flexible hose/ ducting for gases and for abrasive dust, powder, fibers
- extraction unit, dust collection systems, filter system, oil mist extraction
- extraction arm
- explosion hazard area
- textile industry, fiber extraction: spinning machine, knitting machine, weaving loom machine
- animal stall, animal shed: barn ventilation
- clean room ventilation, semiconductor production machine
- surface preparation: shot blasting/ sand blasting recovery (blasting chamber), ship yard, stripping machine, flooring preparation machine, grinding machine
- heating hose: exterior hose as protection hose

Properties

- lightweight and reinforced
- highly flexible + compressible 3:1
- abrasion-resistant
- good resistance to oil, gasoline, and chemicals
- very good low temperature flexibility
- Permanently antistatic wall according to ISO 8031 electrical and surface resistance $< 10^9 \Omega$ (according to NFPA 652 10^8 - $10^9 \Omega$)
- in accordance with ATEX 2014/34/EU (1999/92/EC) and German TRGS 727: aspiration of combustible dust (zone 22 inside), for conveying of non-flammable liquids, for use in zone 1 and 2 (gases)
- conforms to RoHS guideline
- REACH according to --> Technology / Technical Information / REACH

Temperature range

- 40°F to 195°F

- short time to 255°F

Design

- PROTAPE® tape hose
- spring steel wire integrated in wall
- wall: permanently antistatic premium ester-polyurethane (Pre-PUR®)
- wall thickness 0.025 in approx.

Delivery variants

- further diameters and lengths available on request
- black (standard)
- special colors: partially colored, completely colored
- customer-specific branding

I.D. (in / mm)	outer Ø (in)	Pressure DIN 26057 (50% Elongation) (psi)	Vacuum DIN 26057 (axially fixed) (inHG)	Bending radius (in)	Weight (lb/ft)	Dimensions in Stock (ft)	Order No.
- / 40	1.850	14.794 (38.291)	9.893 (20.376)	1.063	0.155	50	330-0040-3030
2 / 50-51	2.283	11.893 (30.748)	6.497 (25.691)	1.299	0.249	50	330-0050-3030
2,36 / 60	2.362	9.935 (25.672)	5.315 (18.013)	1.496	0.289	50	330-0060-3030
3 / 75-76	3.268	7.977 (20.596)	4.282 (11.812)	1.811	0.363	50	330-0075-3030
- / 80	3.465	7.470 (19.290)	3.987 (10.336)	1.890	0.383	50	330-0080-3030
4 / 100-102	4.252	6.019 (15.519)	2.362 (9.154)	2.677	0.457	50	330-0100-3030
4,72 / 120	5.039	5.004 (12.909)	1.919 (6.497)	2.677	0.538	50	330-0120-3030
5 / 125-127	5.236	4.859 (12.473)	1.919 (5.906)	2.795	0.565	50	330-0125-3030
5,5 / 140	5.827	4.279 (11.023)	1.624 (4.725)	3.071	0.565	50	330-0140-3030
6 / 150-152	6.220	3.989 (10.298)	1.624 (4.134)	3.268	0.672	50	330-0150-3030
6,3 / 160	6.614	3.771 (9.718)	1.477 (3.544)	3.465	0.706	50	330-0160-3030
8 / 200-203	8.189	3.046 (7.832)	0.886 (3.248)	4.252	0.901	50	330-0200-3030

Accessories

Positive and negative pressure ratings are the recommended maximum operating values. Products can be manufactured to meet higher operating values upon request. The bend radius is calculated from the center of the hose in an arched position. Additional information at www.norres.com/us/technology/. NORRES reserves the right to modify technical data at any time. Technical data based on tests at 68°F and are approx. values. Proper use and maintenance of NORRES hoses is the sole responsibility of purchaser and ultimate user of the product. The individual conditions, applications and the number of variables make firm recommendations technically impossible. This information is intended as a general guide only.

PROTAPE® PUR 330 AS BLACK (LD)



CLAMP 213



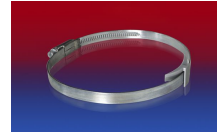
CLAMP 217



CONNECT 223



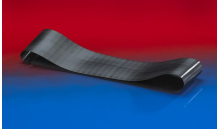
CONNECT 270-271



CLAMP 210 BRIDGE
CLAMP



CLAMP 212



CONNECT 228