

TPE hose, light weight, fabric reinforced (up to +257°F)

### Applications

- flexible hose/ ducting for hot and cold gases
- granulate/ plastic dryer, hot air dryer
- film blowing machine, cooling air at the extrusion tool
- air supply: UV dryer, IR dryer
- textile industry, steam soaking: steam iron, industrial ironing machine, smoothing iron
- bus, utility vehicle, caravan/ trailer, mobile home/ camper/ RV, boat, ship/ vessel/ marine, yacht: ventilation, heating
- paper mill, paper and pulp industry: waste water, air extraction
- heating system/ heater: fresh air supply

### Properties

- fabric reinforced
- light weight
- highly flexible + compressible
- very good heat resistance
- conforms to RoHS guideline
- good resistance to oil, gasoline, and chemicals
- good resistance to alkalis and acids
- REACH according to --> Technology / Technical Information / REACH

### Temperature range

- 40°F to 230°F

- short time to 255°F

### Design

- PROTAPE® tape hose
- spring steel wire integrated in wall
- fabric-reinforced tape
- wall: EPDM/ PP coated fabric
- wall thickness 0.015 in approx.

### Delivery variants

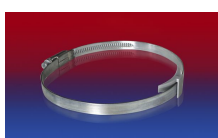
- further diameters and lengths available on request
- black (standard)

I.D.	outer Ø	Pressure	Vacuum	Bending radius	Weight	Production lengths	Order No.
(in / mm)	(in)	(psi)	(inHG)	(in)	(lb/ft)	(ft)	
2 / 50-51	2.110	4.351	2.953	1.969	0.141	-	321-0050-0000
3 / 75-76	3.094	2.901	2.067	2.756	0.208	-	321-0075-0000
4 / 100-102	4.094	2.176	1.477	3.937	0.376	-	321-0100-0000
5 / 125-127	5.079	1.886	1.181	4.921	0.457	-	321-0125-0000
6 / 150-152	6.063	1.595	1.181	5.906	0.491	-	321-0150-0000
8 / 200-203	8.031	1.160	0.738	7.874	0.860	-	321-0200-0000
- / 250	10.031	1.015	0.591	9.843	0.941	25 50	321-0250-0000
- / 300	12.000	0.725	0.443	11.811	1.042	25 50	321-0300-0000
- / 350	13.969	0.580	0.443	13.780	1.075	10	321-0350-0000
- / 400	15.937	0.580	0.443	15.748	1.190	10	321-0400-0000
- / 450	17.906	0.435	0.295	17.717	1.337	10	321-0450-0000

## Accessories



CONNECT 223



CLAMP 210 BRIDGE CLAMP



CLAMP 213



CONNECT 228



CLAMP 212



CONNECT 270-271

Positive and negative pressure ratings are the recommended maximum operating values. Products can be manufactured to meet higher operating values upon request. The bend radius is calculated from the center of the hose in an arched position. Additional information at [www.norres.com/us/technology/](http://www.norres.com/us/technology/). NORRES reserves the right to modify technical data at any time. Technical data based on tests at 68°F and are approx. values. Proper use and maintenance of NORRES hoses is the sole responsibility of purchaser and ultimate user of the product. The individual conditions, applications and the number of variables make firm recommendations technically impossible. This information is intended as a general guide only.



CLAMP 217