

TPE hose, light weight, antistatic

### Applications

- flexible hose/ ducting for hot and cold gases and for dust, powder, fibers
- granulate/ plastic dryer, hot air dryer
- film blowing machine, cooling air at the extrusion tool
- air supply: UV dryer, IR dryer
- textile industry, steam soaking: steam iron, industrial ironing machine, smoothing iron
- bus, utility vehicle, caravan/ trailer, mobile home/ camper/ RV, boat, ship/ vessel/ marine, yacht: ventilation, heating
- heating system/ heater: fresh air supply

### Properties

- lightweight

- highly flexible + compressible
- very good heat resistance
- good resistance to oil, gasoline, and chemicals
- good resistance to alkalis and acids
- Permanently antistatic wall: in accordance with ISO 8031 electrical and surface resistance approx.  $10^9 \Omega$
- conforms to RoHS guideline
- REACH according to --> Technology / Technical Information / REACH

### Temperature range

- 40 °F to 255 °F
- short time to 300 °F

### Design

- PROTAPE® tape hose
- spring steel wire integrated in wall
- wall: thermoplastic rubber (TPE), antistatic
- wall thickness 0.02 in approx.

### Delivery variants

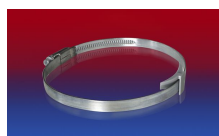
- further diameters and lengths available on request
- black (standard)
- special colors: full colored
- customer-specific branding
- ID 1,5"/ 38mm 12/305mm compressed packed in poly bag (low transportation cost / risk, minimum storage size), ID 12"/315mm 20"/500mm not compressed

I.D.	outer Ø	Pressure	Vacuum	Bending radius	Weight	Dimensions in Stock	Production lengths	Order No.
(in / mm)	(in)	(psi)	(inHG)	(in)	(lb/ft)	(ft)	(ft)	
2 / 50-51	2.283	3.408	3.101	1.299	0.155	25 50	-	320-0050-0000
2,36 / 60	2.677	2.828	2.658	1.496	0.175	-	25 50	320-0060-0000
- / 70	3.071	2.466	2.215	1.693	0.202	-	25 50	320-0070-0000
3 / 75-76	3.268	2.321	2.067	1.811	0.222	25 50	-	320-0075-0000
- / 80	3.465	2.176	1.919	1.890	0.242	-	25 50	320-0080-0000
4 / 100-102	4.291	1.740	1.624	2.283	0.349	25 50	-	320-0100-0000
5 / 125-127	5.276	1.378	1.329	2.795	0.430	25 50	-	320-0125-0000
5,5 / 140	5.827	1.233	1.181	3.071	0.477	-	25 50	320-0140-0000
6 / 150-152	6.260	1.160	0.738	3.268	0.511	25 50	-	320-0150-0000
6,3 / 160	6.614	1.088	0.738	3.465	0.538	-	25 50	320-0160-0000
7 / 178-180	7.402	0.943	0.591	3.858	0.612	-	25 50	320-0180-0000
8 / 200-203	8.268	0.870	0.591	4.252	0.679	25 50	-	320-0200-0000
- / 250	10.157	0.725	0.443	5.236	0.813	-	25 50	320-0250-0000

## Accessories



CONNECT 223



CLAMP 210 BRIDGE CLAMP



CLAMP 217



CONNECT 270-271



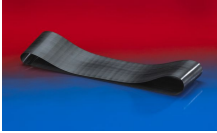
CLAMP 212



CLAMP 213

Positive and negative pressure ratings are the recommended maximum operating values. Products can be manufactured to meet higher operating values upon request. The bend radius is calculated from the center of the hose in an arched position. Additional information at [www.norres.com/us/technology/](http://www.norres.com/us/technology/). NORRES reserves the right to modify technical data at any time. Technical data based on tests at 68 °F and are approx. values. Proper use and maintenance of NORRES hoses is the sole responsibility of purchaser and ultimate user of the product. The individual conditions, applications and the number of variables make firm recommendations technically impossible. This information is intended as a general guide only.

# PROTAPE® TPE 320 AS (XLD)



CONNECT 228

Positive and negative pressure ratings are the recommended maximum operating values. Products can be manufactured to meet higher operating values upon request. The bend radius is calculated from the center of the hose in an arched position. Additional information at [www.norres.com/us/technology/](http://www.norres.com/us/technology/). NORRES reserves the right to modify technical data at any time. Technical data based on tests at 68 °F and are approx. values. Proper use and maintenance of NORRES hoses is the sole responsibility of purchaser and ultimate user of the product. The individual conditions, applications and the number of variables make firm recommendations technically impossible. This information is intended as a general guide only.