

# CLAMP 208



Hose clamp for attachment of light-duty hoses with smooth exterior

### Properties

- easily and quickly fitted
- re-usable

- conforms to RoHS guideline
- REACH according to --> Technology / Technical Information / REACH

### Design

- Quality: W1; Clamp strip + screw + body: galvanised steel
- Quality: W2; Clamp strip + body: stainless steel 1.4016 = AISI 430; Screw: galvanised steel
- Quality: W4; Clamp strip + screw + body: stainless steel 1.4301 = AISI 304

### Delivery variants

- further diameters available on request

Suitable for hose I.D.	Clamping range	Band width	PU	Order No.
(in)	(in)	(in)	(Pcs)	
<b>W1</b>				
8-9	0.315	0.354	1	208-0008-0000
10-11	0.394	0.354	1	208-0010-0000
12-15	0.472	0.354	1	208-0012-0000
16-19	0.630	0.354	1	208-0016-0000
20-24	0.787	0.354	1	208-0020-0000
25-31	0.984	0.354	1	208-0025-0000
32-39	1.260	0.354	1	208-0032-0000
40-49	1.575	0.354	1	208-0040-0000
50-59	1.969	0.354	1	208-0050-0000
60-69	2.362	0.354	1	208-0060-0000
70-79	2.756	0.354	1	208-0070-0000
80-89	3.150	0.354	1	208-0080-0000
90-99	3.543	0.354	1	208-0090-0000
100-109	3.937	0.354	1	208-0100-0000
110-119	4.331	0.354	1	208-0110-0000
120-129	4.724	0.354	1	208-0120-0000
130-139	5.118	0.354	1	208-0130-0000
140-149	5.512	0.354	1	208-0140-0000
150-159	5.906	0.354	1	208-0150-0000
160-169	6.299	0.354	1	208-0160-0000
170-179	6.693	0.354	1	208-0170-0000
180-189	7.087	0.354	1	208-0180-0000
190-199	7.480	0.354	1	208-0190-0000
200-209	7.874	0.354	1	208-0200-0000
210-219	8.268	0.472	1	208-0210-0000
220-229	8.661	0.472	1	208-0220-0000
230-239	9.055	0.472	1	208-0230-0000

Positive and negative pressure ratings are the recommended maximum operating values. Products can be manufactured to meet higher operating values upon request. The bend radius is calculated from the center of the hose in an arched position. Additional information at [www.norres.com/us/technology/](http://www.norres.com/us/technology/). NORRES reserves the right to modify technical data at any time. Technical data based on tests at 68 °F and are approx. values. Proper use and maintenance of NORRES hoses is the sole responsibility of purchaser and ultimate user of the product. The individual conditions, applications and the number of variables make firm recommendations technically impossible. This information is intended as a general guide only.

# CLAMP 208

Suitable for hose I.D.	Clamping range	Band width	PU	Order No.
(in)	(in)	(in)	(Pcs)	
240-249	9.449	0.472	1	208-0240-0000
250-259	9.843	0.472	1	208-0250-0000
260-269	10.236	0.472	1	208-0260-0000
270-279	10.630	0.472	1	208-0270-0000
280-289	11.024	0.472	1	208-0280-0000
290-299	11.417	0.472	1	208-0290-0000
300-309	11.811	0.472	1	208-0300-0000
310-319	12.205	0.472	1	208-0310-0000
320-325	12.598	0.472	1	208-0320-0000
330-339	12.992	0.472	1	208-0330-0000
340-349	13.386	0.472	1	208-0340-0000
350-359	13.780	0.472	1	208-0350-0000
360-369	14.173	0.472	1	208-0360-0000
370-379	14.567	0.472	1	208-0370-0000
380-389	14.961	0.472	1	208-0380-0000
400-409	15.748	0.472	1	208-0400-0000
420-429	16.535	0.472	1	208-0420-0000
440-449	17.323	0.472	1	208-0440-0000
450-459	17.717	0.472	1	208-0450-0000
460-469	18.110	0.472	1	208-0460-0000
480-489	18.898	0.472	1	208-0480-0000
500-509	19.685	0.472	1	208-0500-0000

W2				
8-9	0.315	0.354	1	208-0008-9200
10-11	0.394	0.354	1	208-0010-9200
12-15	0.472	0.354	1	208-0012-9200
16-19	0.630	0.354	1	208-0016-9200
20-24	0.787	0.354	1	208-0020-9200
25-31	0.984	0.354	1	208-0025-9200
32-39	1.260	0.354	1	208-0032-9200
40-49	1.575	0.354	1	208-0040-9200
50-59	1.969	0.354	1	208-0050-9200
70-79	2.756	0.354	1	208-0070-9200
80-89	3.150	0.354	1	208-0080-9200
90-99	3.543	0.354	1	208-0090-9200
110-119	4.331	0.354	1	208-0110-9200
120-129	4.724	0.354	1	208-0120-9200
130-139	5.118	0.354	1	208-0130-9200
140-149	5.512	0.354	1	208-0140-9200
150-159	5.906	0.354	1	208-0150-9200
160-169	6.299	0.354	1	208-0160-9200
170-179	6.693	0.354	1	208-0170-9200
180-189	7.087	0.354	1	208-0180-9200
190-199	7.480	0.354	1	208-0190-9200
200-209	7.874	0.354	1	208-0200-9200
220-229	8.661	0.472	1	208-0220-9200
230-239	9.055	0.472	1	208-0230-9200
240-249	9.449	0.472	1	208-0240-9200
250-259	9.843	0.472	1	208-0250-9200
260-269	10.236	0.472	1	208-0260-9200
270-279	10.630	0.472	1	208-0270-9200
280-289	11.024	0.472	1	208-0280-9200

Positive and negative pressure ratings are the recommended maximum operating values. Products can be manufactured to meet higher operating values upon request. The bend radius is calculated from the center of the hose in an arched position. Additional information at [www.norres.com/us/technology/](http://www.norres.com/us/technology/). NORRES reserves the right to modify technical data at any time. Technical data based on tests at 68 °F and are approx. values. Proper use and maintenance of NORRES hoses is the sole responsibility of purchaser and ultimate user of the product. The individual conditions, applications and the number of variables make firm recommendations technically impossible. This information is intended as a general guide only.

## CLAMP 208

Suitable for hose I.D.	Clamping range	Band width	PU	Order No.
(in)	(in)	(in)	(Pcs)	
290-299	11.417	0.472	1	208-0290-9200
300-309	11.811	0.472	1	208-0300-9200
310-319	12.205	0.472	1	208-0310-9200
320-325	12.598	0.472	1	208-0320-9200
330-339	12.992	0.472	1	208-0330-9200
340-349	13.386	0.472	1	208-0340-9200
350-359	13.780	0.472	1	208-0350-9200
360-369	14.173	0.472	1	208-0360-9200
370-379	14.567	0.472	1	208-0370-9200
380-389	14.961	0.472	1	208-0380-9200
400-409	15.748	0.472	1	208-0400-9200
429-439	16.535	0.472	1	208-0420-9200
440-449	17.323	0.472	1	208-0440-9200
450-459	17.717	0.472	1	208-0450-9200
460-469	18.110	0.472	1	208-0460-9200
480-489	18.898	0.472	1	208-0480-9200
500-509	19.685	0.472	1	208-0500-9200
<b>W4</b>				
8-9	0.315	0.354	1	208-0008-9230
10-11	0.394	0.354	1	208-0010-9230
12-15	0.472	0.354	1	208-0012-9230
16-19	0.630	0.354	1	208-0016-9230
20-24	0.787	0.354	1	208-0020-9230

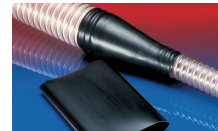
## Accessories



CONNECT 270-271



CONNECT 228



CONNECT 223

Positive and negative pressure ratings are the recommended maximum operating values. Products can be manufactured to meet higher operating values upon request. The bend radius is calculated from the center of the hose in an arched position. Additional information at [www.norres.com/us/technology/](http://www.norres.com/us/technology/). NORRES reserves the right to modify technical data at any time. Technical data based on tests at 68 °F and are approx. values. Proper use and maintenance of NORRES hoses is the sole responsibility of purchaser and ultimate user of the product. The individual conditions, applications and the number of variables make firm recommendations technically impossible. This information is intended as a general guide only.