

# CLAMP 208



Hose clamp for attachment of light-duty hoses with a smooth outer wall

## Properties

- easily and quickly fitted
- re-usable

- conforms to RoHS guideline
- REACH according to --> Technology / Technical Information / REACH

## Design

- Quality: W1; Clamp strip + screw + body: galvanised steel
- Quality: W2; Clamp strip + body: stainless steel 1.4016 = AISI 430; Screw: galvanised steel
- Quality: W4; Clamp strip + screw + body: stainless steel 1.4301 = AISI 304

## Delivery variants

- further diameters available on request

Suitable for Hose I.D.	Clamping Range	Band Width	PU	Order No.
(mm)	(mm)	(mm)	(Pcs)	
<b>W1</b>				
8-9	8-12	9	1	208-0008-0000
10-11	10-16	9	1	208-0010-0000
12-15	12-20	9	1	208-0012-0000
16-19	16-25	9	1	208-0016-0000
20-24	20-32	9	1	208-0020-0000
25-31	25-40	9	1	208-0025-0000
32-39	32-50	9	1	208-0032-0000
40-49	40-60	9	1	208-0040-0000
50-59	50-70	9	1	208-0050-0000
60-69	60-80	9	1	208-0060-0000
70-79	70-90	9	1	208-0070-0000
80-89	80-100	9	1	208-0080-0000
90-99	90-110	9	1	208-0090-0000
100-109	100-120	9	1	208-0100-0000
110-119	110-130	9	1	208-0110-0000
120-129	120-140	9	1	208-0120-0000
130-139	130-150	9	1	208-0130-0000
140-149	140-160	9	1	208-0140-0000
150-159	150-170	9	1	208-0150-0000
160-169	160-180	9	1	208-0160-0000
170-179	170-190	9	1	208-0170-0000
180-189	180-200	9	1	208-0180-0000
190-199	190-210	9	1	208-0190-0000
200-209	200-220	9	1	208-0200-0000
210-219	210-230	12	1	208-0210-0000
220-229	220-240	12	1	208-0220-0000
230-239	230-250	12	1	208-0230-0000

Overpressure and underpressure are recommended threshold operating values, products can be subjected to higher loads upon request. The bending radius is measured through the inside of the hose arch. The right to make technical modifications is reserved. All values determined at 20°C and are approx. data. Additional information at [www.norres.com/en/technology/](http://www.norres.com/en/technology/).

# CLAMP 208

Suitable for Hose I.D.	Clamping Range	Band Width	PU	Order No.
(mm)	(mm)	(mm)	(Pcs)	
240-249	240-260	12	1	208-0240-0000
250-259	250-270	12	1	208-0250-0000
260-269	260-280	12	1	208-0260-0000
270-279	270-290	12	1	208-0270-0000
280-289	280-300	12	1	208-0280-0000
290-299	290-310	12	1	208-0290-0000
300-309	300-320	12	1	208-0300-0000
310-319	310-330	12	1	208-0310-0000
320-325	320-340	12	1	208-0320-0000
330-339	330-350	12	1	208-0330-0000
340-349	340-360	12	1	208-0340-0000
350-359	350-370	12	1	208-0350-0000
360-369	360-380	12	1	208-0360-0000
370-379	370-390	12	1	208-0370-0000
380-389	380-400	12	1	208-0380-0000
400-409	400-420	12	1	208-0400-0000
420-429	420-440	12	1	208-0420-0000
440-449	440-460	12	1	208-0440-0000
450-459	450-470	12	1	208-0450-0000
460-469	460-480	12	1	208-0460-0000
480-489	480-500	12	1	208-0480-0000
500-509	500-520	12	1	208-0500-0000

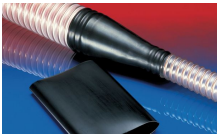
W2				
8-9	8-12	9	1	208-0008-9200
10-11	10-16	9	1	208-0010-9200
12-15	12-20	9	1	208-0012-9200
16-19	16-25	9	1	208-0016-9200
20-24	20-32	9	1	208-0020-9200
25-31	25-40	9	1	208-0025-9200
32-39	32-50	9	1	208-0032-9200
40-49	40-60	9	1	208-0040-9200
50-59	50-70	9	1	208-0050-9200
70-79	70-90	9	1	208-0070-9200
80-89	80-100	9	1	208-0080-9200
90-99	90-110	9	1	208-0090-9200
100-109	100-120	9	1	208-0100-9200
110-119	110-130	9	1	208-0110-9200
120-129	120-140	9	1	208-0120-9200
130-139	130-150	9	1	208-0130-9200
140-149	140-160	9	1	208-0140-9200
150-159	150-170	9	1	208-0150-9200
160-169	160-180	9	1	208-0160-9200
170-179	170-190	9	1	208-0170-9200
180-189	180-200	9	1	208-0180-9200
190-199	190-210	9	1	208-0190-9200
200-209	200-220	9	1	208-0200-9200
220-229	220-240	12	1	208-0220-9200
230-239	230-250	12	1	208-0230-9200
240-249	240-260	12	1	208-0240-9200
250-259	250-270	12	1	208-0250-9200
260-269	260-280	12	1	208-0260-9200
270-279	270-290	12	1	208-0270-9200

Overpressure and underpressure are recommended threshold operating values, products can be subjected to higher loads upon request. The bending radius is measured through the inside of the hose arch. The right to make technical modifications is reserved. All values determined at 20°C and are approx. data. Additional information at [www.norres.com/en/technology/](http://www.norres.com/en/technology/).

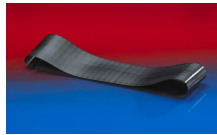
# CLAMP 208

Suitable for Hose I.D.	Clamping Range	Band Width	PU	Order No.
(mm)	(mm)	(mm)	(Pcs)	
280-289	280-300	12	1	208-0280-9200
290-299	290-310	12	1	208-0290-9200
300-309	300-320	12	1	208-0300-9200
310-319	310-330	12	1	208-0310-9200
320-325	320-340	12	1	208-0320-9200
330-339	330-350	12	1	208-0330-9200
340-349	340-360	12	1	208-0340-9200
350-359	350-370	12	1	208-0350-9200
360-369	360-380	12	1	208-0360-9200
370-379	370-390	12	1	208-0370-9200
380-389	380-400	12	1	208-0380-9200
400-409	400-420	12	1	208-0400-9200
429-439	420-440	12	1	208-0420-9200
440-449	440-460	12	1	208-0440-9200
450-459	450-470	12	1	208-0450-9200
460-469	460-480	12	1	208-0460-9200
480-489	480-500	12	1	208-0480-9200
500-509	500-520	12	1	208-0500-9200
		<b>W4</b>		
8-9	8-12	9	1	208-0008-9230
10-11	10-16	9	1	208-0010-9230
12-15	12-20	9	1	208-0012-9230
16-19	16-25	9	1	208-0016-9230
20-24	20-32	9	1	208-0020-9230

## Accessories



CONNECT 223



CONNECT 228



CONNECT 270-271

Overpressure and underpressure are recommended threshold operating values, products can be subjected to higher loads upon request. The bending radius is measured through the inside of the hose arch. The right to make technical modifications is reserved. All values determined at 20°C and are approx. data. Additional information at [www.norres.com/en/technology/](http://www.norres.com/en/technology/).