

Abrasion-proof, oil resistant and polyurethane coated metal protection conduit; very robust and liquid tight; hooked metal profile

Applications

- cable protection: cable protection conduit, cable protection tube, cable protection hose, electric installation, switch cabinets, switch cabinet installation, cable harnessing/ cable assembly

Properties

- IP 68 to EN/ IEC 60529
- highly flexible
- highly abrasion resistant
- increased resistance to tear, pressure and impact
- microbe and hydrolysis resistant

- good resistance to oil, gasoline, and chemicals
- very good low temperature flexibility
- conforms to RoHS guideline

Temperature range

- -40°F to 195°F
- short time to 255°F

Design

- Metal hose

- profiled metal strip, galvanised steel
- hooked profile
- wall: special premium ether-polyurethane (Pre-PUR®)

Delivery variants

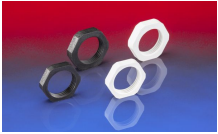
- further diameters and lengths available on request
- metallic blue (standard)
- special colors: full colored
- customer-specific branding

Nominal width connecting part (in)	I.D. (mm)	outer Ø (in)	Bending radius (middle of hose) (in)	Dyn. Bending Radius acc. to Norm (in)	Weight (lb/ft)	PU (ft)	Order No.
PU: 10							
0.394	0.276	0.394	1.575	1.575	0.054	32.810	105-3010-9010
0.551	0.394	0.551	1.811	1.890	0.094	32.810	105-3014-9010
0.827	0.669	0.827	2.953	2.953	0.155	32.810	105-3021-9010
PU: 50							
0.394	0.276	0.394	1.575	1.575	0.054	164.050	105-3010-9050
0.551	0.394	0.551	1.811	1.890	0.094	164.050	105-3014-9050
0.669	0.512	0.669	2.165	2.165	0.114	164.050	105-3017-9050
0.748	0.591	0.748	2.362	2.362	0.128	164.050	105-3019-9050
0.827	0.669	0.827	2.953	2.953	0.155	164.050	105-3021-9050
1.063	0.866	1.063	3.543	3.543	0.255	164.050	105-3027-9050
PU: 25							
1.417	1.142	1.417	4.331	4.331	0.403	82.025	105-3036-9025
1.772	1.496	1.772	5.512	5.512	0.538	82.025	105-3045-9025
2.205	1.929	2.205	6.890	6.890	0.726	82.025	105-3056-9025

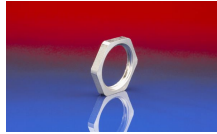
Accessories

Positive and negative pressure ratings are the recommended maximum operating values. Products can be manufactured to meet higher operating values upon request. The bend radius is calculated from the center of the hose in an arched position. Additional information at www.norres.com/us/technology/. NORRES reserves the right to modify technical data at any time. Technical data based on tests at 68°F and are approx. values. Proper use and maintenance of NORRES hoses is the sole responsibility of purchaser and ultimate user of the product. The individual conditions, applications and the number of variables make firm recommendations technically impossible. This information is intended as a general guide only.

METAL HOSE PUR 105



GK 169



GM 164



AU 159

Positive and negative pressure ratings are the recommended maximum operating values. Products can be manufactured to meet higher operating values upon request. The bend radius is calculated from the center of the hose in an arched position. Additional information at www.norres.com/us/technology/. NORRES reserves the right to modify technical data at any time. Technical data based on tests at 68 °F and are approx. values. Proper use and maintenance of NORRES hoses is the sole responsibility of purchaser and ultimate user of the product. The individual conditions, applications and the number of variables make firm recommendations technically impossible. This information is intended as a general guide only.