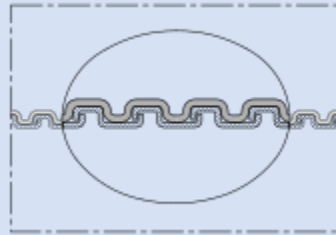
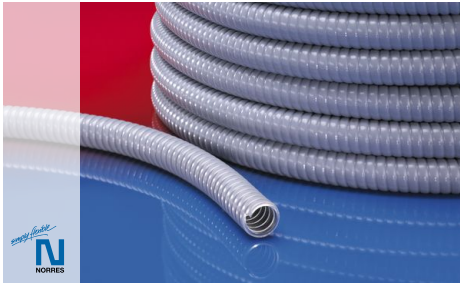


# METAL HOSE PVC 102



Plastic coated, highly flexible metal protection conduit; robust and liquid tight; hooked metal profile

## Applications

- cable protection: cable protection conduit, cable protection tube, cable protection hose, electric installation, switch cabinets, switch cabinet installation, cable harnessing/ cable assembly

## Properties

- IP 68 to EN/ IEC 60529
- highly flexible
- increased resistance to tear, pressure and impact
- good resistance to alkalis and acids

- good resistance to chemicals
- conforms to RoHS guideline

## Temperature Range

- -20 °C to 70 °C
- short time to 80 °C

## Design

- Metal hose

- profiled metal strip, galvanised steel
- hooked profile
- wall: high grade soft PVC

## Delivery variants

- further diameters and lengths available on request
- grey (standard)
- special colours: full coloured
- customer-specific branding

| Nominal width connecting part (mm) | I.D. (mm) | outer Ø (mm) | Bending Radius (middle of hose) (mm) | Dyn. Bending Radius acc. to Norm (mm) | Weight (kg/m) | PU (m) | Order No.     |
|------------------------------------|-----------|--------------|--------------------------------------|---------------------------------------|---------------|--------|---------------|
| <b>PU: 10</b>                      |           |              |                                      |                                       |               |        |               |
| 10                                 | 7         | 10.00        | 32                                   | 40                                    | 0.08          | 10     | 102-3010-9010 |
| 14                                 | 10        | 14.00        | 40                                   | 48                                    | 0.14          | 10     | 102-3014-9010 |
| 17                                 | 13        | 17.00        | 45                                   | 55                                    | 0.17          | 10     | 102-3017-9010 |
| 19                                 | 15        | 19.00        | 52                                   | 60                                    | 0.19          | 10     | 102-3019-9010 |
| 21                                 | 17        | 21.00        | 58                                   | 75                                    | 0.23          | 10     | 102-3021-9010 |
| 27                                 | 22        | 27.00        | 72                                   | 90                                    | 0.38          | 10     | 102-3027-9010 |
| 36                                 | 29        | 36.00        | 98                                   | 110                                   | 0.53          | 10     | 102-3036-9010 |
| 45                                 | 38        | 45.00        | 118                                  | 140                                   | 0.71          | 10     | 102-3045-9010 |
| 56                                 | 49        | 56.00        | 140                                  | 175                                   | 1.08          | 10     | 102-3056-9010 |
| <b>PU: 50</b>                      |           |              |                                      |                                       |               |        |               |
| 10                                 | 7         | 10.00        | 32                                   | 40                                    | 0.08          | 50     | 102-3010-9050 |
| 14                                 | 10        | 14.00        | 40                                   | 48                                    | 0.14          | 50     | 102-3014-9050 |
| 17                                 | 13        | 17.00        | 45                                   | 55                                    | 0.17          | 50     | 102-3017-9050 |
| 19                                 | 15        | 19.00        | 52                                   | 60                                    | 0.19          | 50     | 102-3019-9050 |
| 21                                 | 17        | 21.00        | 58                                   | 75                                    | 0.23          | 50     | 102-3021-9050 |
| 27                                 | 22        | 27.00        | 72                                   | 90                                    | 0.38          | 50     | 102-3027-9050 |
| <b>PU: 25</b>                      |           |              |                                      |                                       |               |        |               |
| 36                                 | 29        | 36.00        | 98                                   | 110                                   | 0.53          | 25     | 102-3036-9025 |
| 45                                 | 38        | 45.00        | 118                                  | 140                                   | 0.71          | 25     | 102-3045-9025 |
| 56                                 | 49        | 56.00        | 140                                  | 175                                   | 1.08          | 25     | 102-3056-9025 |

Overpressure and underpressure are recommended threshold operating values, products can be subjected to higher loads upon request. The bending radius is measured through the inside of the hose arch. The right to make technical modifications is reserved. All values determined at 20 °C and are approx. data. Additional information at [www.norres.com/en/technology/](http://www.norres.com/en/technology/).

# METAL HOSE PVC 102

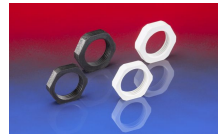
## Accessories



GM 164



AU 159



GK 169

Overpressure and underpressure are recommended threshold operating values, products can be subjected to higher loads upon request. The bending radius is measured through the inside of the hose arch. The right to make technical modifications is reserved. All values determined at 20°C and are approx. data. Additional information at [www.norres.com/en/technology/](http://www.norres.com/en/technology/).